

**Sycamore St. Lift Station and Forcemain Replacement  
Somonauk, IL**

CONTRACTOR'S BID DATE: Thursday March 23, 2023 at 11:00 a.m.

PLACE FOR CONTRACTORS  
TO SUBMIT BIDS:

Village of Somonauk  
131 South Depot Street  
Somonauk, Illinois 60552  
Phone (815) 498-3500

**ADDENDUM NO.1**  
February 22, 2023

**TO ALL PLANHOLDERS:**

To clarify information, it is necessary to provide the following Bid Addendum No.1 for the above referenced project. Bid Addendum No.1 consists of revised specifications and plan sheets.

Prospective Bidders must consider the Bid Addendum No.1 when preparing their bidding proposal. The signed copy of Bid Addendum No.1 must be included with the submitted Bid Proposal. Failure to incorporate all relevant addenda may cause the bid to be declared unacceptable.

The contract documents for the above referenced project are hereby amended as set forth below. The information contained within this Addendum No. 1 shall be treated as if it was originally contained within the contract documents.

**SPECIFICATIONS**

**1. REFER TO SECTION 00110 – NOTICE OF LETTING:**

- a. Under the Filing Of Sealed Bids Paragraph change the bid letting date from "February 27, 2023" with "March 23<sup>rd</sup>, 2023".

**2. REFER TO SECTION 01 2200 – UNIT PRICE:**

- b. Delete entire section and replace with the attached specification section.
- c. The changes include removing Phosphorus fertilizer nutrient (pound), updating Class D Patches, Type IV, to 6", and removing Landscaping, Special (Lump Sum).

**PLANS**

**1. Refer to Plan sheet 02 of 50 Index of Sheets & Summary of Quantities**

- a. Revise/Update line 23 in the base bid summary of quantities and line 20 in the alternative bid summary of quantities to change the depth of Class D patch to 6" from 9".

- b. Remove line 31 from the base bid summary of quantities and remove line 27 from the alternate bid summary of quantities. This removes Landscaping, Special from the project.
  - c. Revise/Update line 47 in the base bid summary of quantities and line 42 in the alternative bid summary of quantities to change the depth of Class D patch to 4" from 3".
2. Refer to Revised Plan Sheets 02, 11, 13-19, and 21-26 based on above revised pay items.

## **GENERAL QUESTIONS AND CLARIFICATIONS**

1. **Question:** On the line-item sheet, it calls out for a 6' Sight Screen Chain Link Fence. However there are no specifications or details about it. Do you know if that's still part of the contract?

**Response:** Yes this is part of the project and the fence location shown as part of the Lift Station Site Plan on Sheet 27 and noted as "Prop. Fence Enclosure." Contractor to follow IDOT Section 640 for specifications and height of 6' as stated.

2. **Question:** On the line item 31 it calls out for "Landscaping, Special". Where exactly can I find that on the plans/specs.

**Response:** Line item 31 from base bid and line item 27 from alternate bid are being removed from the project as part of this Addendum No. 1.

3. **Question:** For the Driveway pavement what's the breakout. (i.e. 2" and 6" of N50 Surface / Binder).

**Response:** The Driveway pavement depth is to be a depth of 3" N50 HMA Surface Course with aggregate paid separately.

4. **Question:** Is the Class D patch all N50 Binder or is N50 surface to be placed on top? What's the breakout, i.e. 2" surface and 7" Binder?

**Response:** The Class D patch depth is to be a total depth of 6" which consists of 2" HMA Surface Course and 4" HMA Binder Course with aggregate or trench backfill paid separately.

5. **Question:** Is there any soil boring information available for the lift station?

**Response:** The Village is in the process of obtaining soil boring. The expected date is March 16<sup>th</sup> to have information in hand; therefore, we are tentatively setting the bid letting date to March 23<sup>rd</sup>, 2023 at 11:00 a.m.

HR Green, Inc.  
Project No. 171228

Sycamore St. Lift Station and Forcemain Replacement  
Somonauk, IL  
Addendum No.1

All bidders shall acknowledge receipt and acceptance of Addendum No. 1 by signing in the space provided below. Bids submitted without Addendum No. 1 being acknowledged will be considered non-responsive.

**Acknowledgement of Addendum No.1**

Date: \_\_\_\_\_

Company Name: \_\_\_\_\_

Signature: \_\_\_\_\_

Name: \_\_\_\_\_

**END OF ADDENDUM No.1**

**SECTION 01 2200  
UNIT PRICES**

**PART 1 GENERAL**

**1.01 SECTION INCLUDES**

- A. Measurement and Payment - Unit Prices.
- B. List of unit prices, for use in preparing Bids.

**1.02 UNIT QUANTITIES SPECIFIED**

- A. Quantities indicated in the Bid Form are for bidding and contract purposes only. Quantities and measurements of actual Work will determine the payment amount.

**1.03 MEASUREMENT AND PAYMENT - UNIT PRICES**

- A. Measurement methods delineated in the schedule of unit prices below.
- B. The Engineer will take all measurements and compute quantities. Measurements and quantities may be verified by Contractor.
- C. Payment Includes: Full compensation for all required labor, Products, tools, equipment, plant, transportation, services and incidentals; application or installation of an item of the Work; overhead and profit.
- D. Unless specifically noted as a bid item in the Form of Proposal, all other work which must be performed to complete the project shall be considered as "Incidental Work" and the cost of such work (including furnishing and installing materials) shall be included in the unit prices of items of work.
- E. Measurement by Volume: Measured by cubic dimension using mean length, width and height or thickness.
- F. Measurement by Area: Measured by square dimension using mean length and width or radius.
- G. Linear Measurement: Measured by linear dimension, at the item centerline or mean chord.

**1.04 PAYMENT**

- A. Payment for Work governed by unit prices will be made on the basis of the actual measurements and quantities of Work that is incorporated in or made necessary by the Work and accepted by the Engineer, multiplied by the unit price.

**1.05 DEFECT ASSESSMENT**

- A. Replace Work, or portions of the Work, not complying with specified requirements.
- B. If, in the opinion of Engineer, it is not practical to remove and replace the Work, Engineer will direct one of the following remedies:
  - 1. The defective Work may remain, but the unit price will be adjusted to a new unit price at the discretion of Engineer.
  - 2. The defective Work will be partially repaired to the instructions of the Engineer, and the unit price will be adjusted to a new unit price at the discretion of Engineer.

**1.06 SCHEDULE OF UNIT PRICES**

- A. Each bid item on the Schedule of Prices will be measured in the field by Engineer and the Contractor will be paid for completed work as described herein.
- B. The following unit bid items are IDOT standard pay items and the work shall be completed as with the applicable section of the IDOT Standard Specifications for Road and Bridge Construction Manual (latest edition), the specifications and as shown on the plans. The work shall be measured and paid for per the IDOT Standard Specifications for Road and Bridge Construction Manual (latest edition).
  - 1. TREE REMOVAL (6 TO 15 UNITS DIAMETER) (UNIT)

2. TREE REMOVAL (OVER 15 UNITS DIAMETER) (UNIT)
  3. TREE TRUNK PROTECTION (EACH)
  4. TREE ROOT PRUNING (EACH)
  5. REMOVAL AND DISPOSAL OF UNSUITABLE MATERIAL (CU YD)
  6. TRENCH BACKFILL (CU YD)
  7. TOPSOIL FURNISH AND PLACE, 4" (SQ YD)
  8. NITROGEN FERTILIZER NUTRIENT (POUND)
  9. POTASSIUM FERTILIZER NUTRIENT (POUND)
  10. SEEDING, CLASS 1A (ACRE)
  11. MULCH, METHOD 2 (ACRE)
  12. TEMPORARY EROSION CONTROL SEEDING (POUND)
  13. PERIMETER EROSION BARRIER (FOOT)
  14. INLET AND PIPE PROTECTION (EACH)
  15. AGGREGATE BASE COURSE, TYPE B 2" (SQ YD)
  16. AGGREGATE BASE COURSE, TYPE B 4" (SQ YD)
  17. PORTLAND CEMENT CONCRETE SIDEWALK 5 INCH (SQ FT)
  18. DETECTABLE WARNINGS (SQ FT)
  19. PAVEMENT REMOVAL (SQ YD)
  20. DRIVEWAY PAVEMENT REMOVAL (SQ YD)
  21. COMBINATION CURB AND GUTTER REMOVAL (FOOT)
  22. SIDEWALK REMOVAL (SQ FT)
  23. CLASS D PATCHES, TYPE IV, 6 INCH (SQ YD)
  24. COMBINATION CONCRETE CURB AND GUTTER, TYPE B-6.12 (FOOT)
  25. SIGHT SCREEN (CHAIN LINK FENCE) 6' (FOOT)
  26. MOBILIZATION
  27. THERMOPLASTIC PAVEMENT MARKING - LINE 6" (FOOT)
  28. THERMOPLASTIC PAVEMENT MARKING - LINE 24" (FOOT)
- C. SANITARY SEWER, SPECIAL, PVC, C900 (BELL & SPIGOT) FORCE MAIN 10" (LF)
1. The unit price shall be full compensation for furnishing all materials and labor needed to install SANITARY SEWER, SPECIAL, PVC, C900 (BELL & SPIGOT) FORCE MAIN 10" per the SPECS and as shown on the plans. Includes trench excavation, disposal of excess excavated material offsite, sheeting and shoring, dewatering, bedding, pipe, gaskets, bolts, pipeline accessories, testing, and other miscellaneous related work necessary for a complete installation. The length of pipe installed shall be measured along centerline of pipe from inside wall to inside wall of structures or connection point to existing and/or previously installed pipe. TRENCH BACKFILL when required, shall be measured and paid for separately. Backfilling of trench with excavated material shall not be measured and paid for separately.
- D. SANITARY SEWER, SPECIAL, PVC, C900 (FUSIBLE) FORCE MAIN 10" (MATERIAL ONLY - TRENCHLESS) (LF)
1. The unit price shall be full compensation for furnishing all materials for SANITARY SEWER, SPECIAL, PVC, C900 (FUSIBLE) FORCE MAIN 10" (MATERIAL ONLY - TRENCHLESS) per the SPECS and as shown on the plans. Includes pipe and other necessary material to complete the project. The length of pipe shall be measured along centerline of pipe from inside wall to inside wall of structures or connection point to existing and/or previously installed pipe. TRENCHLESS PIPE INSTALLATION, 10" (PIPE PAID FOR SEPARATELY) shall be measured and paid for separately.
- E. TRENCHLESS PIPE INSTALLATION, 10" (PIPE PAID FOR SEPARATELY) (LF)
1. The unit price shall be full compensation for furnishing all materials and labor needed to install TRENCHLESS PIPE INSTALLATION, 10" (PIPE PAID FOR SEPARATELY) per the SPECS and as shown on the plans. Includes trench excavation, disposal of excess

excavated material offsite, sheeting and shoring, dewatering, testing, and other miscellaneous related work necessary for a complete installation. The length of pipe installed shall be measured along centerline of pipe from inside wall to inside wall of structures or connection point to existing and/or previously installed pipe. TRENCH BACKFILL when required, shall be measured and paid for separately. Backfilling of trench with excavated material shall not be measured and paid for separately.

F. SANITARY SEWER, SPECIAL, DIP, CLASS 52 (LF)

1. The unit price shall be full compensation for furnishing all materials and labor for installation of SANITARY SEWER, SPECIAL, DIP, CLASS 52 per the SPECS and the size pipe shown on the plans. Includes trench excavation, disposal of excess excavated material offsite, sheeting and shoring, dewatering, bedding, pipe, backfill, compacting, gaskets, bolts, pipeline accessories and other miscellaneous related work including testing. The length of pipe installed shall be measured along centerline of pipe from inside wall to inside wall of structures or connection point to existing and/or previously installed pipe. TRENCH BACKFILL when required, shall be measured and paid for separately. Backfilling of trench with excavated material shall not be measured and paid for separately.

G. TEMPORARY ACCESS (PRIVATE ENTRANCE) (EACH)

1. The unit price shall be full compensation for furnishing all materials and labor needed to install TEMPORARY ACCESS (PRIVATE ENTRANCE) per the SPECS and as shown on the plans. Includes all material and labor necessary to construct temporary access for private entrances. Access to private buildings shall be maintained throughout construction of the project.

H. TEMPORARY ACCESS (COMMERCIAL ENTRANCE) (EACH)

1. The unit price shall be full compensation for furnishing all materials and labor needed to install TEMPORARY ACCESS (COMMERCIAL ENTRANCE) per the SPECS and as shown on the plans. Includes all material and labor necessary to construct temporary access for commercial entrances. Access to commercial buildings shall be maintained throughout construction of the project.

I. DROP CONNECTION (EACH)

1. The unit price shall be full compensation for furnishing all materials and labor for installation of DROP CONNECTION as shown on the plans. Includes all work, material, and labor necessary to construct a drop connection as specified and shown on the plans.

J. SANITARY SEWER CONNECTION (EACH)

1. The unit price shall be full compensation for furnishing all materials and labor for completing the SANITARY SEWER CONNECTION per the SPECS and as shown on the plans. Includes fittings and other miscellaneous related work to make connection to the sanitary sewer.

K. CONNECTION TO EXISTING MANHOLE (EACH)

1. The unit price shall be full compensation for furnishing all materials and labor for installation of CONNECTION TO EXISTING MANHOLE per the SPECS and as shown on the plans. Includes coring into existing manhole, connection to existing manhole, necessary boot/seal for connection, and any other miscellaneous related work to make the connection to the existing manhole.

L. FORCEMAIN CLEANOUT VAULT (EACH)

1. The unit price shall be full compensation for furnishing all materials and labor for installing FORCEMAIN CLEANOUT VAULT and appurtenances as shown on the plans. Includes excavation, disposal of excess excavated material offsite, sheeting and shoring, dewatering, bedding, backfill, compacting, cleanout vault, cleanout fitting and accessories, bituminous coating, chimney seals, butyl rubber strip sealant, external joint sealant, precast concrete adjusting rings, cover frame and cover and other miscellaneous related work including testing. Trench backfill shall not be measured for separately.

- M. AIR RELEASE VALVE MANHOLE (EACH)
1. The unit price shall be full compensation for furnishing all materials and labor for installing AIR RELEASE VALVE MANHOLE and appurtenances per the SPECS and as shown on the plans. Includes excavation, disposal of excess excavated material offsite, sheeting and shoring, dewatering, bedding, backfill, compacting, air release manhole, air release valve, bituminous coating, chimney seals, butyl rubber strip sealant, external joint sealant, precast concrete adjusting rings, cover frame and cover and other miscellaneous related work including testing. Trench backfill shall not be measured for separately.
- N. 15'X15' JUNCTION SAN MAN (SPECIAL) 2T1F CL (EACH)
1. The unit price shall be full compensation for furnishing all materials and labor for installing 15'X15' JUNCTION SAN MAN (SPECIAL) 2T1F CL per the SPECS and as shown on the plans. Includes excavation, disposal of excess excavated material offsite, sheeting and shoring, dewatering, bedding, formwork, reinforcing steel, concrete, concrete accessories, casing frame and lid, bituminous membrane, overflow weir, connections to proposed improvements, and other miscellaneous related work including testing. Trench backfill shall not be measured and paid for separately.
- O. HOT-MIX ASPHALT DRIVEWAY PAVEMENT, 3" (SY)
1. The unit price for this item shall be full compensation for furnishing all materials and labor to complete the HOT-MIX ASPHALT DRIVEWAY PAVEMENT, 3" per the SPECS and as shown on the plans. This work includes installation and compaction of new material, and material testing. Additional effort required for this purpose is considered incidental.
- P. POTHOLING (EACH)
1. The unit price for this item shall be full compensation for furnishing all materials and labor necessary to complete POTHOLING to complete the necessary work for the project to pothole and locate utilities. Unit price includes excavation, backfill, utility coordination, transportation and associated fees, disposal, and associated fees, obtaining utility horizontal and elevation, providing utility horizontal and elevation, and restoration.
- Q. EXPLORATION TRENCHING, SPECIAL (FOOT)
1. The unit price for this item shall be full compensation for furnishing all materials and labor necessary to complete EXPLORATION TRENCH, SPECIAL, of the depth specified, to complete the necessary work for the project. Unit price includes excavation, backfill, and disposal of excess material at the depths required to locate existing utilities.
- R. WASHOUT BASIN (LUMP SUM)
1. The unit price shall be full compensation for furnishing all materials and labor to complete WASHOUT BASIN per the SPECS and as shown on the plans. Includes installation construction washout basin, maintenance as needed, and removal of washout basin, and any miscellaneous work necessary to complete the work.
- S. CONSTRUCTION LAYOUT (LUMP SUM)
1. The work will be paid as a LUMP SUM in accordance with Check Sheet #10 of the Supplemental Specifications and Recurring Special Provisions of the Standard Specifications.
- T. TREE, GLEDITSIA TRIACANTHOS INERMIS SKYLINE (SKYLINE THORNLESS COMMON HONEYLOCUST), 2-1/2" CALIPER, BALLED AND BURLAPPED (EACH)
1. This unit price for this item includes furnishing all material and labor required to complete the work TREE, GLEDITSIA TRIACANTHOS INERMIS SKYLINE (SKYLINE THORNLESS COMMON HONEYLOCUST), 2-1/2" CALIPER, BALLED AND BURLAPPED as shown on plans. The planting shall be completed based on IDOT Standard Specifications for Road and Bridge Construction Manual (latest edition). The work shall consist of excavation, disposal of excess excavated material, planting the tree, site restoration and any other miscellaneous work.
- U. PLUG VAVLE, WITH VALVE BOX (EACH)

1. This work shall be paid for at the contract unit price each for PLUG VAVLE, WITH VALVE BOX of the type and size specified per the SPECS and plans, which price shall include providing and installing the valve, valve box, operator extension, handwheel operator, trench backfill, and backfill material as detailed on the plans.
- V. REMOVING AND RESETTING STREET SIGNS (EACH)
1. The unit price shall be full compensation for furnishing all materials and labor to complete REMOVING AND RESETTING STREET SIGNS per the SPECS and as shown on the plans. Care shall be taken in removal of the existing street signs, any damaged caused during the Contractor's operations shall be repaired at the Contractor's expense. Condition of the existing infrastructure shall be documented and submitted to the Engineer prior to commencement of work. Includes removal and storage of existing street signs, excavation, disposal of excess excavated material, disposal of existing foundation, furnish and install of new concrete foundation and anchor bolts, and backfill.
- W. SANITARY SEWER LIFT STATION (LUMP SUM)
1. The unit price for this item shall be full compensation for furnishing all materials and labor to complete the SANITARY SEWER LIFT STATION per the specifications and as shown on the plans. Includes furnish and installation of wet well, valve vault, pumps, pump accessories, piping, valves, vents, electrical/control panels, electrical supply and installation, ComEd coordination, and concrete equipment pads, excavation, backfill, manufacturer startup, manufacturer training, manufacturer warranty, manufacturer testing of pumps and controls, and all incidentals to provide a complete operating sanitary lift station system as specified.
- X. PUMP STATION PACKAGE ENGINE GENERATOR SYSTEMS (LUMP SUM)
1. The unit price for this item shall be full compensation for furnishing all materials and labor to complete the PUMP STATION PACKAGE ENGINE GENERATOR SYSTEMS per the specifications and as shown on the plans. Includes furnish and installation of generator, automatic transfer switch, piping, valves, vents, electrical/control panels, electrical/gas supply and installation, ComEd/Nicor coordination, and concrete equipment pad, excavation, backfill, manufacturer startup, manufacturer training, manufacturer warranty, manufacturer testing of generator and controls, and all incidentals to provide a complete operating engine generator system as specified.
- Y. TRAFFIC CONTROL AND PROTECTION (SPECIAL) (LUMP SUM)
1. The LUMP SUM price shall be full compensation for furnishing all materials, labor and equipment necessary to control traffic during construction. Includes furnishing, installing, maintaining, moving, relocating, and removing all traffic control devices including barricades, drums, lights, standard signs, flaggers, uniformed officers, temporary pavement markings and orange safety fence at road closures.
    - a. Partial payment for traffic control will be based on the estimated percentage of work completed at the time of submittal of the application for payment. Final payment will be made upon completion of all work on the project required by the contract, full payment will be made for this contract item, including any amount not paid as a partial payment.
- Z. PRECONSTRUCTION VIDEO TAPING (LUMP SUM)
1. The unit price for this item shall be full compensation for furnishing all material and labor to complete the PRECONSTRUCTION VIDEO TAPING per the specifications. This includes video taping the existing conditions before construction starts.



COMPANY NAME: HRGreen  
PROJECT CONTACT: 2/22/2023 12:55 PM  
CLIENT: 171228-Cover  
DATE PLOTTED: 2/22/2023 12:55 PM  
FILE NAME: 171228-Cover  
PLOT DRIVER: DWG To PDF.pc3  
PEN TABLE: ILDOT-Standard.ctb



USER NAME = MLEWIS	DESIGNED -- MPL	REVISED  - 02/22/23 - ADD#1
FILE NAME = 171228-Cover	DRAWN -- MPL	REVISED --
PLOT SCALE = N.T.S.	CHECKED -- DWS	REVISED --
PLOT DATE = 2/22/2023	DATE -- 02/02/2023	REVISED --

VILLAGE OF SOMONAUK

INDEX OF SHEETS & SUMMARY OF QUANTITIES

SCALE: N.T.S. SHEET NO. 01 OF 01 SHEETS STA. TO STA.

F.A.U. RTE.	SECTION	COUNTY	TOTAL SHEETS	SHEET NO.
		DEKALB/LASALLE	50	02
CONTRACT NO. _____				
FED. ROAD DIST. NO. -- ILLINOIS FED. AID PROJECT				

SHEET INDEX

SHEET NUMBER

SHEET TITLE

01	COVER SHEET
02	INDEX OF SHEETS -- SUMMARY OF QUANTITIES
03	BENCHMARKS, UTILITY CONTACTS & SYMBOL LEGENDS
04	GENERAL NOTES
05	GENERAL NOTES CONT.
06	GENERAL NOTES CONT.
07	OVERALL PLAN
08	TYPICAL SECTIONS
09	TYPICAL SECTIONS CONT.
10	TYPICAL SECTIONS CONT.
11	W.W.T.P. PROPERTY -- PNP -- PROP. FORCE MAIN -- OPEN CUT (BASE BID)
12	W.W.T.P. PROPERTY -- PNP -- PROP. FORCE MAIN -- OPEN CUT (BASE BID)
13	W.W.T.P. PROPERTY -- PNP -- PROP. FORCE MAIN -- OPEN CUT (BASE BID)
14	GAGE ST. -- PNP -- PROP. FORCE MAIN -- OPEN CUT (BASE BID)
16	GAGE ST. -- PNP -- PROP. FORCE MAIN -- OPEN CUT (BASE BID)
17	LASALLE ST. -- PNP -- PROP. FORCE MAIN -- OPEN CUT (BASE BID)
18	SYCAMORE ST. -- PNP -- PROP. FORCE MAIN -- OPEN CUT (BASE BID)
19	W.W.T.P. PROPERTY -- PNP -- PROP. FORCE MAIN -- HDD (ALTERNATE BID)
20	W.W.T.P. PROPERTY -- PNP -- PROP. FORCE MAIN -- HDD (ALTERNATE BID)
21	W.W.T.P. PROPERTY -- PNP -- PROP. FORCE MAIN -- HDD (ALTERNATE BID)
22	GAGE ST. -- PNP -- PROP. FORCE MAIN -- HDD (ALTERNATE BID)
23	GAGE ST. -- PNP -- PROP. FORCE MAIN -- HDD (ALTERNATE BID)
15	GAGE ST. -- PNP -- PROP. FORCE MAIN -- OPEN CUT (BASE BID)
24	GAGE ST. -- PNP -- PROP. FORCE MAIN -- HDD (ALTERNATE BID)
25	LASALLE ST. -- PNP -- PROP. FORCE MAIN -- HDD (ALTERNATE BID)
26	SYCAMORE ST. -- PNP -- PROP. FORCE MAIN -- HDD (ALTERNATE BID)
27	SYCAMORE ST. -- LIFT STATION SITE -- GRADING PLAN
28	SYCAMORE ST. -- LIFT STATION ELEVATION PLAN
29	SYCAMORE ST. -- LIFT STATION DETAILS
30	LIFT STATION ONE-LINE DIAGRAM
31	LIFT STATION -- PLAN -- ELECTRICAL
32	LIFT STATION -- ELEVATION -- ELECTRICAL
33	LIFT STATION ELECTRICAL SCHEDULE AND DETAILS
34	EROSION CONTROL -- RESTORATION SPECIFICATIONS
35	ILLINOIS URBAN MANUAL -- NRCS DETAILS
36	ILLINOIS URBAN MANUAL -- NRCS DETAILS
37	ILLINOIS WATER & SEWER DETAILS
38	ILLINOIS WATER & SEWER DETAILS
39	I.D.O.T. HIGHWAY STANDARD DETAILS.
40	I.D.O.T. HIGHWAY STANDARD DETAILS.
41	I.D.O.T. HIGHWAY STANDARD DETAILS.
42	I.D.O.T. HIGHWAY STANDARD DETAILS.
43	I.D.O.T. HIGHWAY STANDARD DETAILS.
44	I.D.O.T. HIGHWAY STANDARD DETAILS.
45	I.D.O.T. HIGHWAY STANDARD DETAILS.
46	I.D.O.T. HIGHWAY STANDARD DETAILS
47	I.D.O.T. HIGHWAY STANDARD DETAILS
48	I.D.O.T. HIGHWAY STANDARD DETAILS
49	SANITARY SEWER JUNCTION MANHOLE DETAILS
50	SANITARY SEWER JUNCTION MANHOLE DETAILS

SUMMARY OF QUANTITIES -- TRENCHED INSTALLATION -- BASE BID

SYCAMORE LIFT STATION REPLACEMENT AND FORCE MAIN (TRENCHED INSTALLATION - BASE BID)				
	PAY ITEM #	CODED PAY ITEMS	UNITS	QUANTITY
1	20100110	TREE REMOVAL (6 TO 15 UNITS DIAMETER)	UNIT	12
2	20100210	TREE REMOVAL (OVER 15 UNITS DIAMETER)	UNIT	59
3	20101100	TREE TRUNK PROTECTION	EACH	6
4	20101200	TREE ROOT PRUNING	EACH	6
5	20201200	REMOVAL AND DISPOSAL OF UNSUITABLE MATERIAL	CU YD	100
6	20800150	TRENCH BACKFILL	CU YD	450
7	21101615	TOPSOIL FURNISH AND PLACE, 4"	SQ YD	3,389
8	25000400	NITROGEN FERTILIZER NUTRIENT	POUND	64
9	25000600	POTASSIUM FERTILIZER NUTRIENT	POUND	64
10	25000110	SEEDING, CLASS 1A	ACRE	0.8
11	25100115	MULCH, METHOD 2	ACRE	0.8
12	28000250	TEMPORARY EROSION CONTROL SEEDING	POUND	142
13	28000400	PERIMETER EROSION BARRIER	FOOT	1,290
14	28000500	INLET AND PIPE PROTECTION	EACH	7
15	35101582	AGGREGATE BASE COURSE, TYPE B 2"	SQ YD	64
16	35101600	AGGREGATE BASE COURSE, TYPE B 4"	SQ YD	105
17	42400200	PORTLAND CEMENT CONCRETE SIDEWALK 5 INCH	SQ FT	532
18	42400800	DETECTABLE WARNINGS	SQ FT	44
19	44000100	PAVEMENT REMOVAL	SQ YD	361
20	44000200	DRIVEWAY PAVEMENT REMOVAL	SQ YD	283
21	44000500	COMBINATION CURB AND GUTTER REMOVAL	FOOT	38
22	44000600	SIDEWALK REMOVAL	SQ FT	532
23	44201723	CLASS D PATCHES, TYPE IV, 6 INCH	SQ YD	361
24	60603800	COMBINATION CONCRETE CURB AND GUTTER, TYPE B-B, 12"	FOOT	38
25	64000110	SIGHT SCREEN (CHAIN LINK FENCE) 6'	FOOT	76
26	67100100	MOBILIZATION	L SUM	1
27	78000400	THERMOPLASTIC PAVEMENT MARKING - LINE 6"	FOOT	63
28	78000650	THERMOPLASTIC PAVEMENT MARKING - LINE 24"	FOOT	14
29	X1700066	POTHOLING	EACH	3
30	X0326806	WASHOUT BASIN	L SUM	1
31	X0327618	LANDSCAPING, SPECIAL	L SUM	0
32	X2130010	EXPLORATION TRENCH, SPECIAL	FOOT	75
33	X4021000	TEMPORARY ACCESS (PRIVATE ENTRANCE)	EACH	6
34	X4022000	TEMPORARY ACCESS (COMMERCIAL ENTRANCE)	EACH	1
35	X0323168	DROP CONNECTION	EACH	1
36	X0324769	SANITARY SEWER LIFT STATION	L SUM	1
37	X0326447	FORCEMAIN CLEANOUT VAULT	EACH	1
38	X0326713	SANITARY SEWER CONNECTION	EACH	1
39	X0326749	AIR RELEASE VALVE MANHOLE	EACH	1
40	X6020399	CONNECTION TO EXISTING MANHOLE	EACH	2
41	Z0058000	SANITARY SEWER, SPECIAL, PVC, C900 (BELL & SPIGOT) FORCE MAIN 10" (TRENCHED INSTALLATION)	FOOT	2,674
42	Z0058000	SANITARY SEWER, SPECIAL, DIP, CLASS 52, 10" (TRENCHED INSTALLATION)	FOOT	18
43	Z0058000	SANITARY SEWER, SPECIAL, DIP, CLASS 52, 16" (TRENCHED INSTALLATION)	FOOT	113
44	XXXXXXXX	15'X15' JUNCTION SAN MAN (SPECIAL) 2T1F CL	EACH	1
45	XXXXXXXX	PLUG VALVE, 10" WITH VALVE BOX	EACH	1
46	XXXXXXXX	PLUG VALVE, 16" WITH VALVE BOX	EACH	1
47	Z0004510	HOT-MIX ASPHALT DRIVEWAY PAVEMENT, 3"	SQ YD	185
48	X7010216	TRAFFIC CONTROL AND PROTECTION, (SPECIAL)	L SUM	1
49	X1400160	PUMP STATION PACKAGE ENGINE GENERATOR SYSTEMS	L SUM	1
50	Z0051500	REMOVING AND RESETTNG STREET SIGNS	EACH	2
51	Z0013798	CONSTRUCTION LAYOUT	L SUM	1
52	A2004820	TREE, GLEDITSIA TRIACANTHOS INERMIS SKYLINE (SKYLINE THORNLESS COMMON HONEYLOCUST), 2-1/2" CALIPER, BALLED AND BURLAPPED	EACH	2
53	XX003668	PRECONSTRUCTION VIDEO TAPING	L SUM	1

\* = SPECIAL PROVISION  
t = SPECIALTY ITEMS

SUMMARY OF QUANTITIES

SUMMARY OF QUANTITIES -- PORTIONS TRENCHLESS INSTALLATION -- ALTERNATE BID

SYCAMORE LIFT STATION REPLACEMENT AND FORCE MAIN (PORTIONS TRENCHLESS INSTALLATION - ALTERNATE BID)				
	PAY ITEM #	CODED PAY ITEMS	UNITS	QUANTITY
1	20101100	TREE TRUNK PROTECTION	EACH	1
2	20101200	TREE ROOT PRUNING	EACH	1
3	20201200	REMOVAL AND DISPOSAL OF UNSUITABLE MATERIAL	CU YD	50
4	20800150	TRENCH BACKFILL	CU YD	175.0
5	21101615	TOPSOIL FURNISH AND PLACE, 4"	SQ YD	1,332
6	25000400	NITROGEN FERTILIZER NUTRIENT	POUND	25
7	25000600	POTASSIUM FERTILIZER NUTRIENT	POUND	25
8	25000110	SEEDING, CLASS 1A	ACRE	0.3
9	25100115	MULCH, METHOD 2	ACRE	0.3
10	28000250	TEMPORARY EROSION CONTROL SEEDING	POUND	56
11	28000400	PERIMETER EROSION BARRIER	FOOT	100
12	28000500	INLET AND PIPE PROTECTION	EACH	7
13	35101582	AGGREGATE BASE COURSE, TYPE B 2"	SQ YD	55
14	35101600	AGGREGATE BASE COURSE, TYPE B 4"	SQ YD	98
15	42400200	PORTLAND CEMENT CONCRETE SIDEWALK 5 INCH	SQ FT	351
16	42400800	DETECTABLE WARNINGS	SQ FT	16
17	44000100	PAVEMENT REMOVAL	SQ YD	136
18	44000200	DRIVEWAY PAVEMENT REMOVAL	SQ YD	108
19	44000600	SIDEWALK REMOVAL	SQ FT	351
20	44201723	CLASS D PATCHES, TYPE IV, 6 INCH	SQ YD	136
21	64000110	SIGHT SCREEN (CHAIN LINK FENCE) 6'	FOOT	76
22	67100100	MOBILIZATION	L SUM	1
23	78000400	THERMOPLASTIC PAVEMENT MARKING - LINE 6"	FOOT	63
24	78000650	THERMOPLASTIC PAVEMENT MARKING - LINE 24"	FOOT	14
25	X1700066	POTHOLING	EACH	5
26	X0326806	WASHOUT BASIN	L SUM	1
27	X0327618	LANDSCAPING, SPECIAL	L SUM	0
28	X2130010	EXPLORATION TRENCH, SPECIAL	FOOT	45
29	X0323168	DROP CONNECTION	EACH	1
30	X0324769	SANITARY SEWER LIFT STATION	L SUM	1
31	X0326447	FORCEMAIN CLEANOUT VAULT	EACH	1
32	X0326713	SANITARY SEWER CONNECTION	EACH	1
33	X0326749	AIR RELEASE VALVE MANHOLE	EACH	1
34	X6020399	CONNECTION TO EXISTING MANHOLE	EACH	2
35	Z0058000	SANITARY SEWER, SPECIAL, PVC, C900 (BELL & SPIGOT) FORCE MAIN 10" (TRENCHED INSTALLATION)	FOOT	1,164
36	Z0058000	SANITARY SEWER, SPECIAL, PVC, C900 (FUSIBLE) FORCE MAIN 10" (MATERIAL ONLY - TRENCHLESS)	FOOT	1,507
37	Z0058000	SANITARY SEWER, SPECIAL, DIP, CLASS 52, 10" (TRENCHED INSTALLATION)	FOOT	18
38	Z0058000	SANITARY SEWER, SPECIAL, DIP, CLASS 52, 16" (TRENCHED INSTALLATION)	FOOT	113
39	XXXXXXXX	15'X15' JUNCTION SAN MAN (SPECIAL) 2T1F CL	EACH	1
40	XXXXXXXX	PLUG VALVE, 10" WITH VALVE BOX	EACH	1
41	XXXXXXXX	PLUG VALVE, 16" WITH VALVE BOX	EACH	1
42	Z0004510	HOT-MIX ASPHALT DRIVEWAY PAVEMENT, 3"	SQ YD	10
43	X7010216	TRAFFIC CONTROL AND PROTECTION, (SPECIAL)	L SUM	1
44	X1400160	PUMP STATION PACKAGE ENGINE GENERATOR SYSTEMS	L SUM	1
45	Z0013798	CONSTRUCTION LAYOUT	L SUM	1
46	XXXXXXXX	TRENCHLESS PIPE INSTALLATION, 10" (PIPE PAID FOR SEPARATELY)	FOOT	1,507
47	XX003668	PRECONSTRUCTION VIDEO TAPING	L SUM	1

PLAN	SURVEYED	BY	DATE
NOTE BOOK	ALIGNMENT	CHECKED	
NO.	RT. OF WAY	CHECKED	
	NO.	CADD FILE NAME	

PROFILE	SURVEYED	BY	DATE
NOTE BOOK	GRADES	CHECKED	
NO.	B.M. NOTED	NOTATIONS	CH'KD
	NO.	STRUCTURE	

COMPANY NAME: **HRGreen**  
PROJECT CONTACT: **HRGreen.com**  
DATE PLOTTED: 2/22/2023 1:00 PM  
FILE NAME: 171228-PnP-OC-100-WWTP  
PLOT DRIVER: DWG To PDF.pc3  
PLOT DATE: 2/22/2023  
PLOT SCALE: 1"=20'

### FORCEMAIN TAGS:

01 EX. OXIDATION DITCH INV @ BLDG = 682.50 (16"E) (CORED)	03 15'X15' JUNCTION SAN MAN (SPECIAL) 2T1F CL (SEE DETAIL) RIM = 689.00 WEIR WALL ELEV. = 686.00 INV = 682.70'(16"W) INV = 676.55'(10"E) INV = 676.35'(10"S)	04 EX. SANITARY MANHOLE (E2516) PROP. EXTERNAL DROP (SEE DETAIL) RIM = 686.61 INV = 676.25 (PROP. UPPER 10"N) INV = 672.00 (PROP. LOWER 10"N) INV = 673.61 (10"S) INV = 671.81 (18"E) INV = 671.81 (18"S) INV = 668.86 (18"NW)	05 8' SAN SEW SPL, DIP, CL52 10" @ 0.59%	06 PLUG VLVE 10 W/VLVE BOX WITH HANDWHEEL OPERATOR RIM = 686.45 INV = 676.30'(10"N) INV = 676.30'(10"S)	07 10' SAN SEW SPL, DIP, CL52 10" @ 0.48%	08 894' SAN SEW SPL, PVC, C900 (BELL & SPIGOT) FORCE MAIN 10"
---	---	---	--	--	---	---

**LEGEND:**  
(SEE SHEET 03 FOR SYMBOL AND HATCH LEGENDS)

(X)

INDICATES EROSION CONTROL MEASURE

XXX

INDICATES REMOVAL TAG

#

INDICATES PROP. FORCE MAIN TAG

—

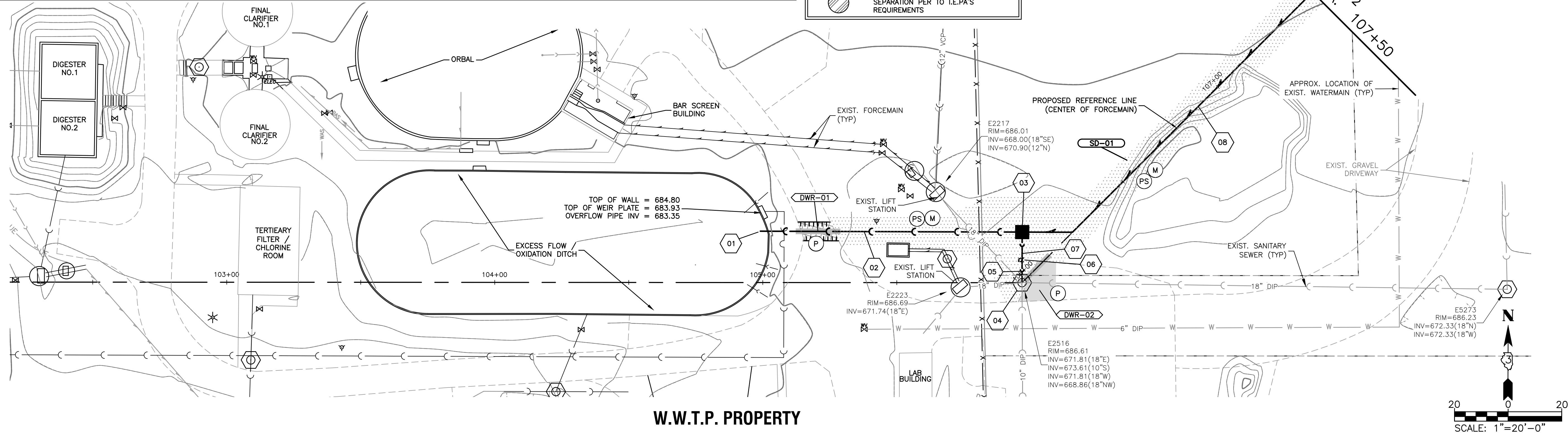
DENOTES TRENCH BACKFILL LOCATIONS

INDICATES MAINTAIN 18" VERTICAL SEPARATION PER TO I.E.PA'S REQUIREMENTS

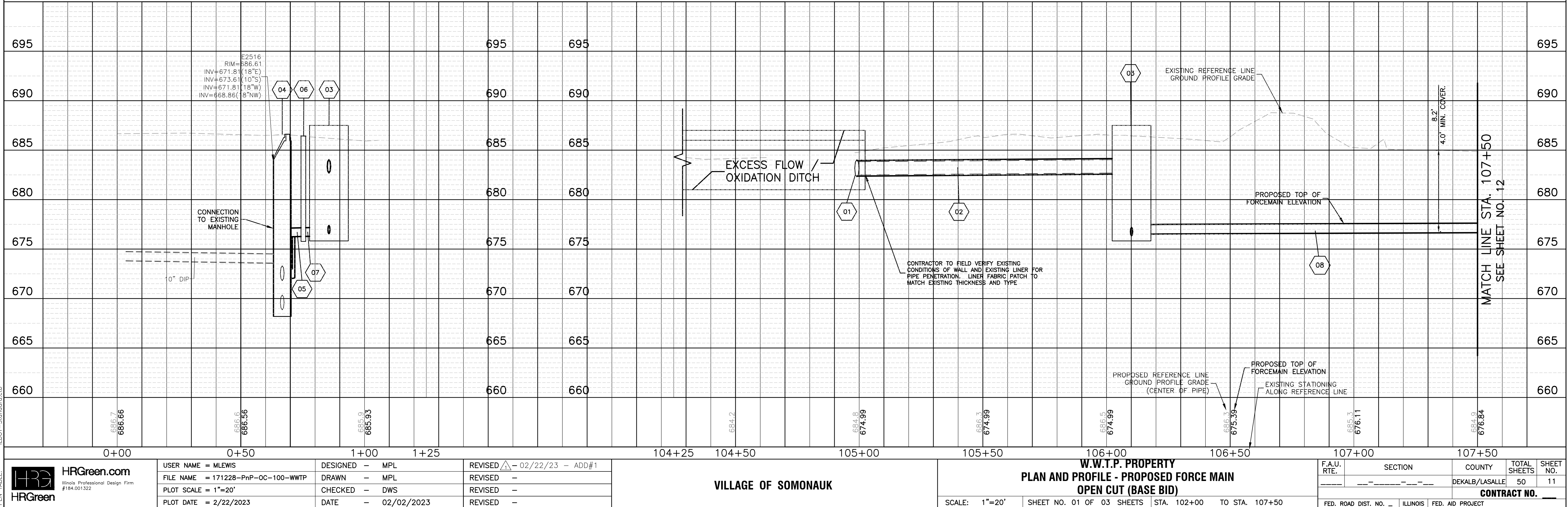
NOTE:  
• IF SANITARY SEWER SERVICES ARE FOUND TO BE CROSSING/CONFLICT WITH THE CONSTRUCTION OF THE PROPOSED FORCE MAIN, SANITARY SEWER SERVICES SHALL BE REPLACED. I.E.PA REQUIREMENTS SHALL BE ADHERED TO. (AS INCLUDED TO CONTRACT) (SEE SPECIFICATIONS)

REMOVAL TAGS				
Tag No.	Description	Units	Quantity	
DWR-01	DRIVE PAVEMENT REM	SY	10.0	
DWR-02	DRIVE PAVEMENT REM	SY	17.0	

PROPOSED TAGS				
Tag No.	Description	Units	Quantity	
DWR-01	HMA DRIVEWAY PAVT	3	SY	10.0
DWR-02	AGG BASE CSE B	4	SY	17.0
SD-01	SEEDING CL 1A	1A	SF	3,557



### W.W.T.P. PROPERTY



### VILLAGE OF SOMONAUK

### W.W.T.P. PROPERTY PLAN AND PROFILE - PROPOSED FORCE MAIN OPEN CUT (BASE BID)

F.A.U. RTE.	SECTION	COUNTY	TOTAL SHEETS	SHEET NO.
		DEKALB/LASALLE	50	11
CONTRACT NO. _____				
FED. ROAD DIST. NO. _____ ILLINOIS FED. AID PROJECT				

SCALE: 1"=20' SHEET NO. 01 OF 03 SHEETS STA. 102+00 TO STA. 107+50

COMPANY NAME:  
PROJECT CONTACT:  
CLIENT:  
DATE PLOTTED: 2/22/2023 1:01 PM  
FILE NAME: 171228-PnP-OC-100-WWTP  
PLOT DRIVER: DWG To PDF.pc3  
PEN TABLE: ILDTOT-Standard.ctb

**FORCEMAIN TAGS:**

08  
894" SAN SEW SPL, PVC, C900 (BELL & SPIGOT)  
FORCE MAIN 10"

09  
AIR RELEASE VALVE MHL, 5" DIA (SEE DETAIL)  
RIM = 682.85  
TOP = 678.30

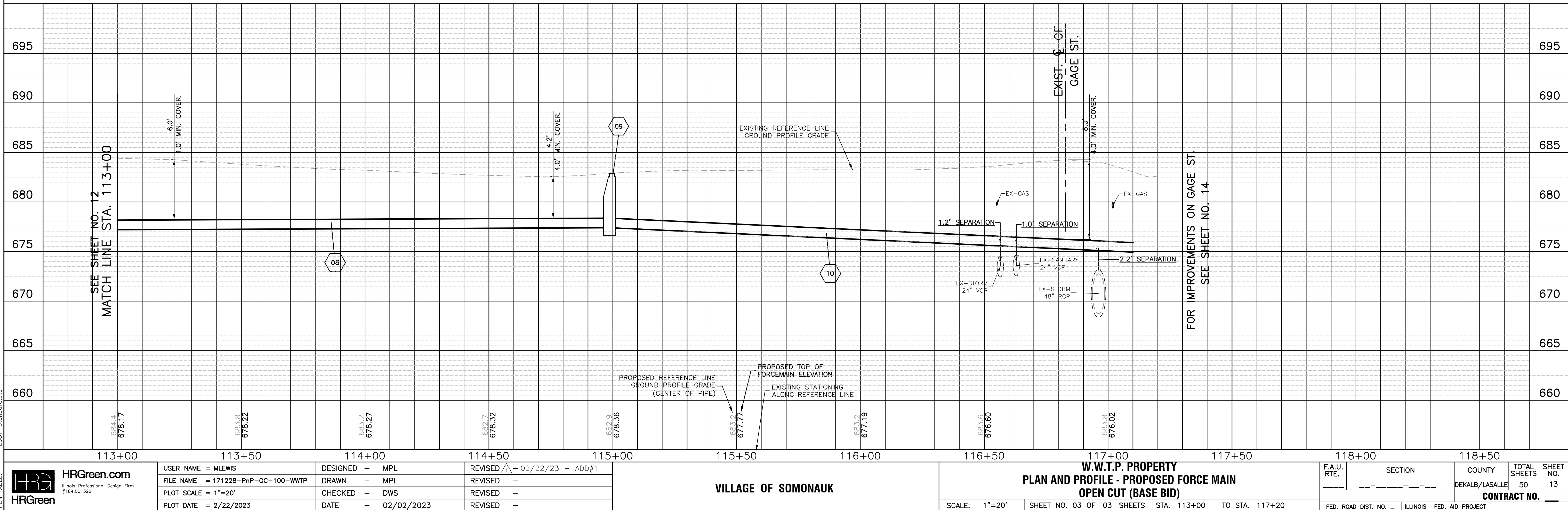
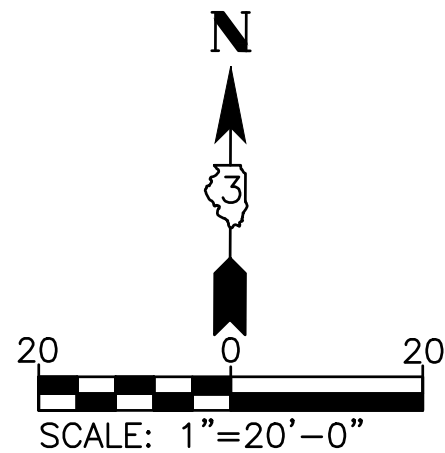
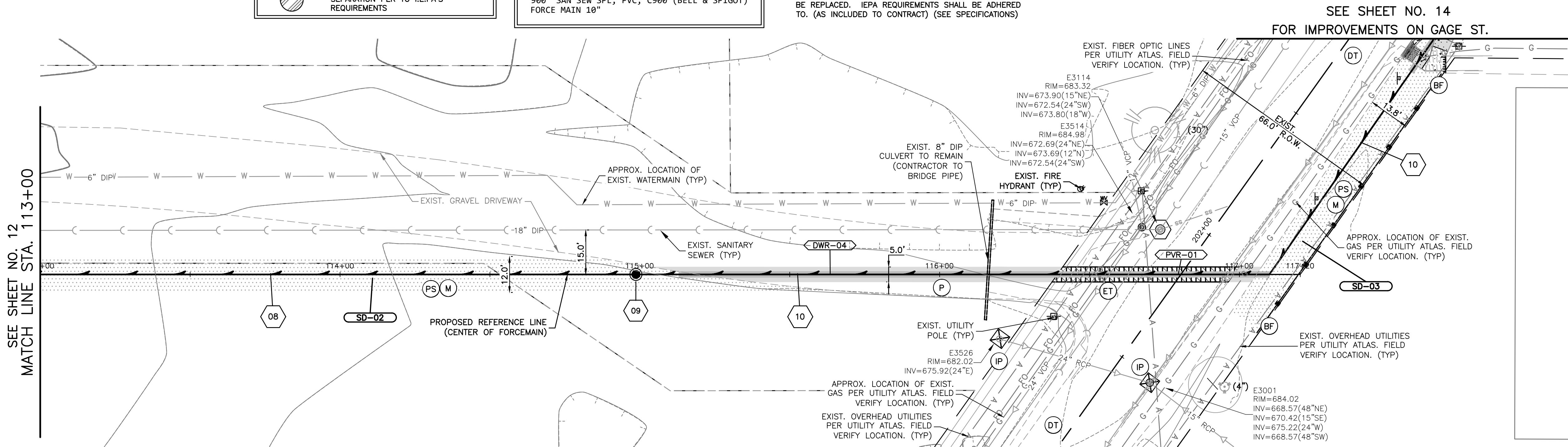
10  
900" SAN SEW SPL, PVC, C900 (BELL & SPIGOT)  
FORCE MAIN 10"

XXX		PROPOSED TAGS	
Tag No.	Description	Units	Quantity
DNR-04	AGG BASE CSE B 4	SY	74.0
PVR-01	CL D PATCH T4 6	SEE REM.	QUANT.
SD-02	SEEDING CL 1A	SF	8,251
SD-03	SEEDING CL 1A	SF	1,335

INLET AND PIPE PROTECTION				
Exist. Structure	Prop. Structure	Station	Side	Quantity
No.	No.			EACH
IP-01	N/A	116+20.11'	RT	1.0
IP-02	N/A	201+48.45'	RT	1.0

NOTE:

- IF SANITARY SEWER SERVICES ARE FOUND TO BE CROSSING/CONFLICT WITH THE CONSTRUCTION OF THE PROPOSED FORCE MAIN, SANITARY SEWER SERVICES SHALL BE REPLACED. IEPA REQUIREMENTS SHALL BE ADHERED TO. (AS INCLUDED TO CONTRACT) (SEE SPECIFICATIONS)





XXX		PROPOSED TAGS	
Tag No.	Description	Units	Quantity
DWR-04	AGG. BASE CSE B 4	SV	74.0
PVR-01	CL D PATCH T4 6	SEE REM.	QUANT.
PVR-02	CL D PATCH T4 6	SEE REM.	QUANT.
PVR-03	CL D PATCH T4 6	SEE REM.	QUANT.
SWR-01	PC CONC SIDEWALK 5	SEE REM.	QUANT.
CR-01	COMB CCRG TB6.12	SEE REM.	QUANT.
CR-02	COMB CCRG TB6.12	SEE REM.	QUANT.
DW-01	DETECTABLE WARNINGS	SF	11.0
DW-02	DETECTABLE WARNINGS	SF	17.0
SD-03	SEEDING CL 1A	SF	1,335
SD-04	SEEDING CL 1A	SF	31
SD-05	SEEDING CL 1A	SF	58
SD-06	SEEDING CL 1A	SF	3,101

SEE SHEET NO. 13  
FOR IMPROVEMENTS ON TO WWTP

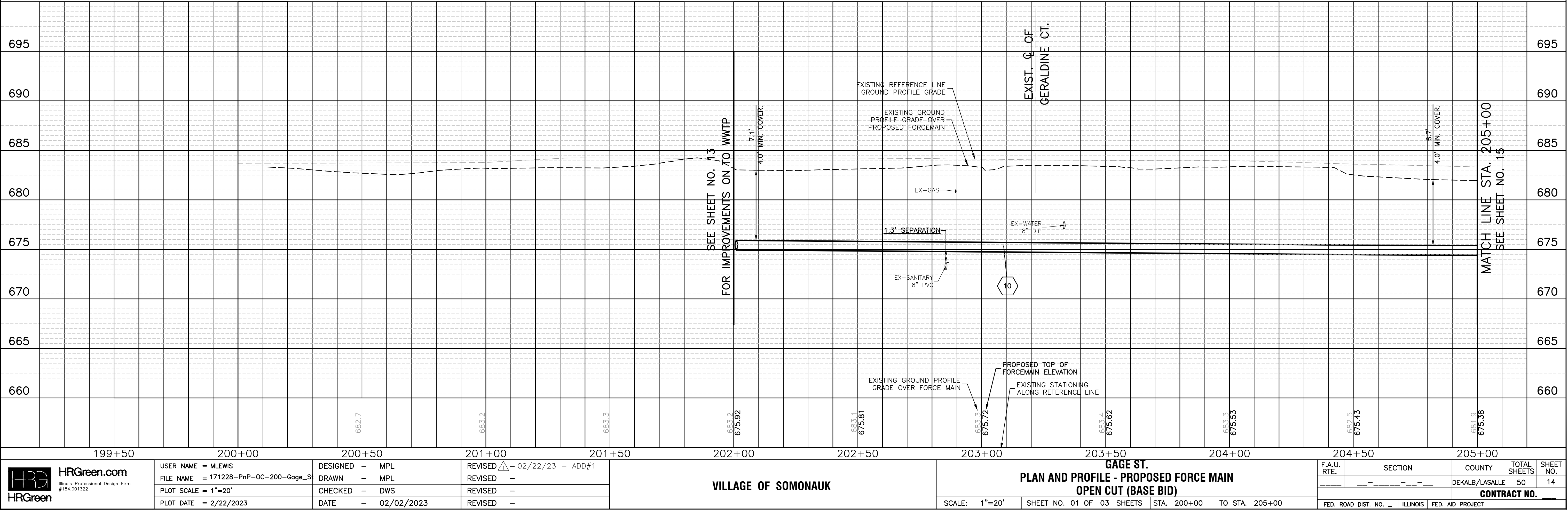
**GAGE ST.**

MATCH LINE STA. 205+00  
SEE SHEET NO. 15

SD-05	SEEDING CL	1A	SF	58
SD-06	SEEDING CL	1A	SF	3,101

TO: (AS INCLUDED TO CONTRACT) (SEE SPECIFICATIONS)

SEPARATION PER TO I.E.P.A.'S REQUIREMENTS



PLAN	SURVEYED	DATE
NOTE BOOK	ALIGNMENT CHECKED	
NO.	RT. OF WAY CHECKED	
	CADD FILE NAME	

PROFILE	SURVEYED	DATE
NOTE BOOK	GRADES CHECKED	
NO.	B.M. NOTED	
	STRUCTURE NOTATIONS CH'KD	

COMPANY NAME: HRGreen.com  
PROJECT CONTACT: 171228-PnP-OC-200-Gage-St  
DATE PLOTTED: 2/22/2023 1:05 PM  
FILE NAME: 171228-PnP-OC-200-Gage-St  
PLOT DRIVER: DWG To PDF.pc3  
PLOT DATE: 2/22/2023  
PLOT SCALE: 1"=20'

PERIMETER EROSION BARRIER			
Begin Station	End Station	Side	Length LF
204+41.3	205+29.9	RT	88.6
205+34.9	205+84.4	RT	49.5
206+03.7	210+03.5	RT	399.8
210+26.3	210+66.9	RT	40.6

**FORCEMAIN TAGS:**

10  
900' SAN SEW SPL, PVC, C900 (BELL & SPIGOT)  
FORCE MAIN 10"

11  
FORCEMAIN CLINOUT VLT, 5' DIA (SEE DETAIL)  
RIM = 681.35  
TOP = 678.95

12  
880' SAN SEW SPL, PVC, C900 (BELL & SPIGOT)  
FORCE MAIN 10"

**LEGEND:**  
(SEE SHEET 03 FOR SYMBOL AND HATCH LEGENDS)

(X) INDICATES EROSION CONTROL MEASURE

(XXX) INDICATES REMOVAL TAG

(#) INDICATES PROP. FORCE MAIN TAG

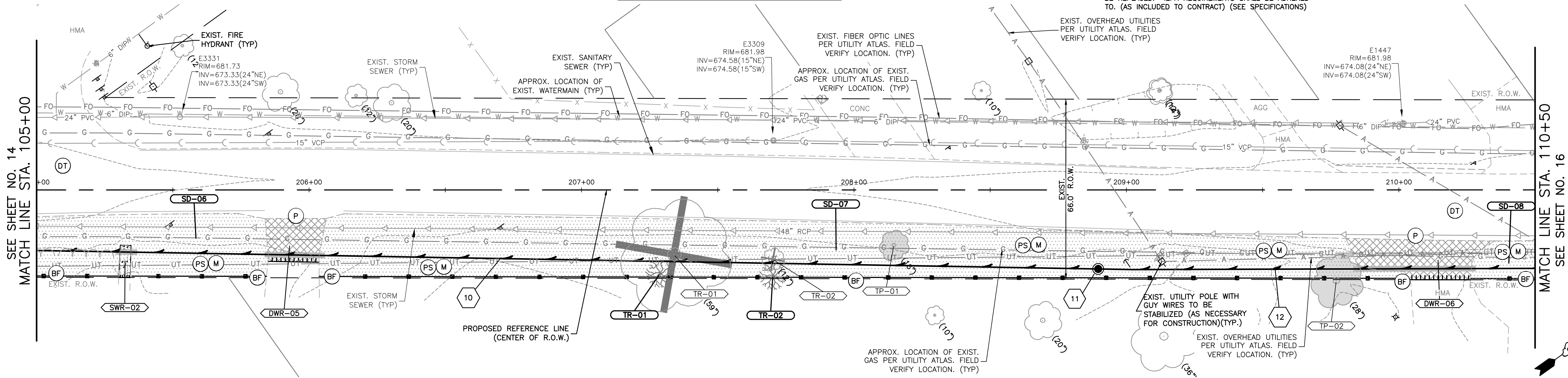
— DENOTES TRENCH BACKFILL LOCATIONS

(Hatched) INDICATES MAINTAIN 18" VERTICAL SEPARATION PER TO I.E.P.A'S REQUIREMENTS

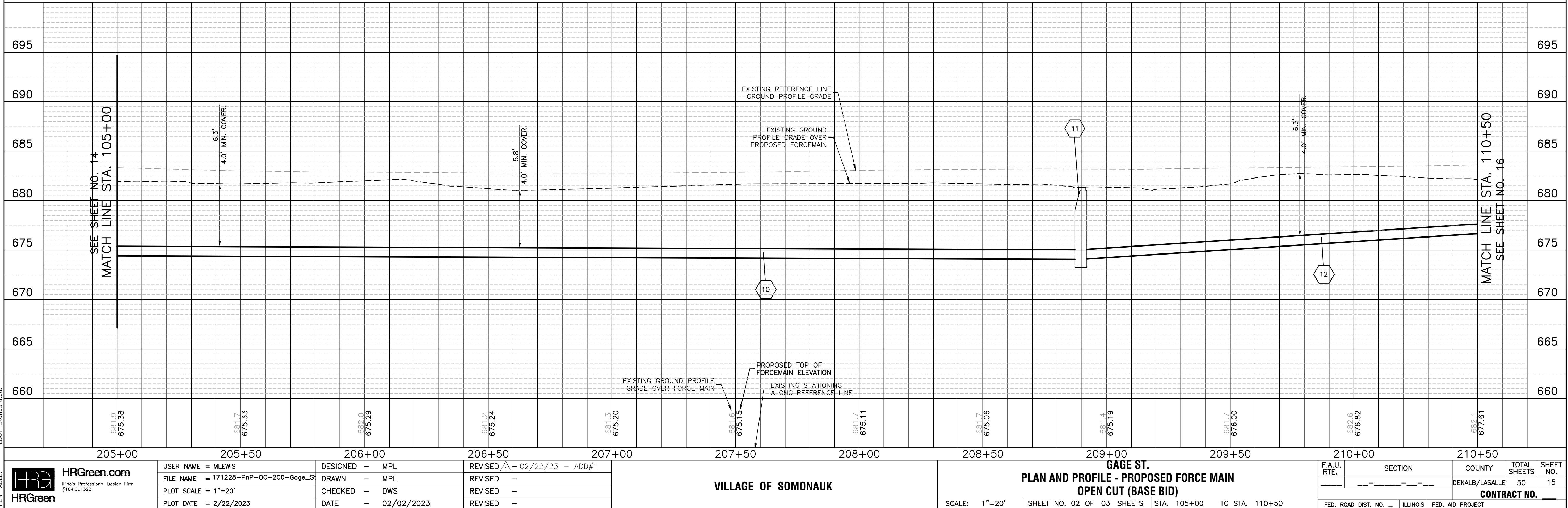
REMOVAL TAGS			
Tag No.	Description	Units	Quantity
DWR-05	DRIVE PAVEMENT REM	SY	36.0
DWR-06	DRIVE PAVEMENT REM	SY	66.0
SWR-02	PC CONC SIDEWALK 5'	SY	47.0
TR-01	TREE REMOV OVER 15"	UNIT	59.0
TR-02	TREE REMOV 6-15"	UNIT	12.0
TP-01	TREE TRUNK PROTECTION	EACH	1.0
TP-02	TREE TRUNK PROTECTION	EACH	1.0
TP-02	TREE ROOT PRUNING	EACH	1.0

PROPOSED TAGS			
Tag No.	Description	Units	Quantity
DWR-05	HMA DRIVEWAY PAVT 3'	SY	36.0
DWR-06	HMA DRIVEWAY PAVT 3'	SY	66.0
SWR-02	PC CONC SIDEWALK 5'	SY	47.0
SD-06	SEEDING CL 1A	SF	3,101
SD-07	SEEDING CL 1A	SF	7,650
SD-08	SEEDING CL 1A	SF	544
TR-01	TREE	EACH	1.0
TR-02	TREE	EACH	1.0

NOTE:  
• IF SANITARY SEWER SERVICES ARE FOUND TO BE CROSSING/CONFLICT WITH THE CONSTRUCTION OF THE PROPOSED FORCE MAIN, SANITARY SEWER SERVICES SHALL BE REPLACED. IEPA REQUIREMENTS SHALL BE ADHERED TO. (AS INCLUDED TO CONTRACT) (SEE SPECIFICATIONS)



GAGE ST.

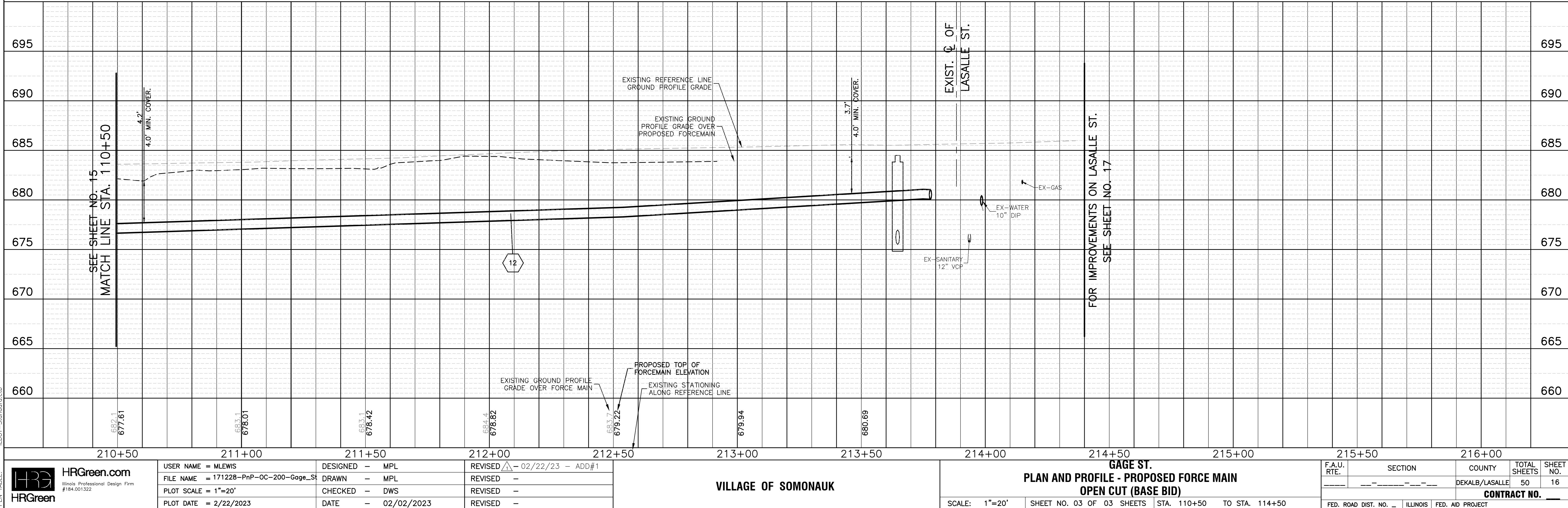


HRGreen.com				VILLAGE OF SOMONAUK				GAGE ST. PLAN AND PROFILE - PROPOSED FORCE MAIN OPEN CUT (BASE BID)				F.A.U. RTE. SECTION COUNTY DEKALB/LASALLE			
USER NAME = MLEWIS				DESIGNED - MPL				SCALE: 1"=20'				FED. ROAD DIST. NO. ILLINOIS FED. AID PROJECT			
FILE NAME = 171228-PnP-OC-200-Gage-St				DRAWN - MPL				SHEET NO. 02 OF 03 SHEETS				TOTAL SHEETS 50			
PLOT SCALE = 1"=20'				CHECKED - DWS				STA. 105+00 TO STA. 110+50				CONTRACT NO.			
PLOT DATE = 2/22/2023				DATE - 02/02/2023											
REVISED - 02/22/23 - ADD#1				REVISED -											
REVISED -				REVISED -											
REVISED -				REVISED -											

PLAN	SURVEYED	DATE
NOTE BOOK	ALIGNMENT CHECKED	BY
NO.	RT. OF WAY CHECKED	
	CADD FILE NAME	

PROFILE	SURVEYED	DATE
NOTE BOOK	GRADES CHECKED	BY
NO.	B.M. NOTED	
	STRUCTURE NOTATIONS CHK'D	

COMPANY NAME: HRGreen.com  
PROJECT CONTACT: 171228-PnP-OC-200-Gage\_St  
DATE PLOTTED: 2/22/2023 1:06 PM  
FILE NAME: 171228-PnP-OC-200-Gage\_St  
PLOT DRIVER: DWG To PDF.pc3  
PEN TABLE: ILDOT-Standard.ctb



PERIMETER EROSION BARRIER			
Begin Station	End Station	Side	Length LF
210+82.3	211+62.4	RT	89.0
211+80.1	213+67.9	RT	195.0

INLET AND PIPE PROTECTION				
Exist. Structure No.	Prop. Structure No.	Station	Side	Quantity EACH
IP-04	N/A	213+63.91'	RT	1.0
IP-05	N/A	213+64.70'	RT	1.0
IP-06	N/A	214+32.26'	RT	1.0

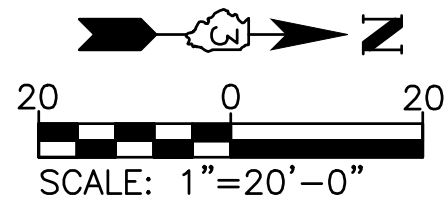
LEGEND:	
(SEE SHEET 03 FOR SYMBOL AND HATCH LEGENDS)	
(X)	INDICATES EROSION CONTROL MEASURE
XXX	INDICATES REMOVAL TAG
#	INDICATES PROP. FORCE MAIN TAG
—	DENOTES TRENCH BACKFILL LOCATIONS
(Hatched)	INDICATES MAINTAIN 18" VERTICAL SEPARATION PER TO I.E.PA'S REQUIREMENTS

FORCEMAIN TAGS:	
12	880' SAN SEW SPL, PVC, C900 (BELL & SPIGOT) FORCE MAIN 10"

REMOVAL TAGS			
Tag No.	Description	Units	Quantity
DWR-07	DRIVE PAVEMENT REM	SY	30.0
DWR-08	DRIVE PAVEMENT REM	SY	43.0
PVR-04	PAVEMENT REM	SY	208.0
TP-03	TREE ROOT PRUNING	EACH	1.0
TP-04	TREE TRUNK PROTECTION	EACH	1.0
TP-04	TREE ROOT PRUNING	EACH	1.0
TP-05	TREE TRUNK PROTECTION	EACH	1.0
TP-05	TREE ROOT PRUNING	EACH	1.0

PROPOSED TAGS			
Tag No.	Description	Units	Quantity
DWR-07	HMA DRIVEWAY PAVT	3 SY	30.0
DWR-08	HMA DRIVEWAY PAVT	3 SY	43.0
PVR-04	CL D PATCH T4	6	SEE REM. QUANT.
SD-09	SEEDING CL 1A	SF	1,083
SD-10	SEEDING CL 1A	SF	3,633

NOTE:  
• IF SANITARY SEWER SERVICES ARE FOUND TO BE CROSSING/CONFLICT WITH THE CONSTRUCTION OF THE PROPOSED FORCE MAIN, SANITARY SEWER SERVICES SHALL BE REPLACED. IEPA REQUIREMENTS SHALL BE ADHERED TO. (AS INCLUDED TO CONTRACT) (SEE SPECIFICATIONS)





PLAN	SURVEYED	BY	DATE
NOTE BOOK	ALIGNMENT CHECKED		
NO.	RT. OF WAY CHECKED		
	CADD FILE NAME		

PROFILE	SURVEYED	BY	DATE
NOTE BOOK	GRADES CHECKED		
NO.	B.M. NOTED		
	STRUCTURE NOTATIONS CH'KD		

COMPANY NAME: **HRGreen.com**  
PROJECT CONTACT: **HRGreen**  
DATE PLOTTED: 2/22/2023 1:10 PM  
FILE NAME: 171228-PnP-OC-300-LaSalle\_St  
PLOT DRIVER: DWG To PDF.pc3  
PLOT DATE: 2/22/2023  
PLOT SCALE: 1"=20'

INLET AND PIPE PROTECTION				
Exist. Structure No.	Prop. Structure No.	Station	Side	Quantity
IP-04	N/A	213+63.91'	RT	1.0
IP-05	N/A	213+64.70'	RT	1.0
IP-06	N/A	214+32.26'	RT	1.0
IP-07	N/A	303+97.78'	RT	1.0

PERIMETER EROSION BARRIER				
Begin Station	End Station	Side	Length LF	
301+07.8	301+52.4	RT	46.0	
301+56.2	302+34.4	RT	79.0	
302+50.9	302+93.6	RT	43.0	
302+96.5	303+38.3	RT	42.0	
303+84.3	304+18.0	RT	41.0	

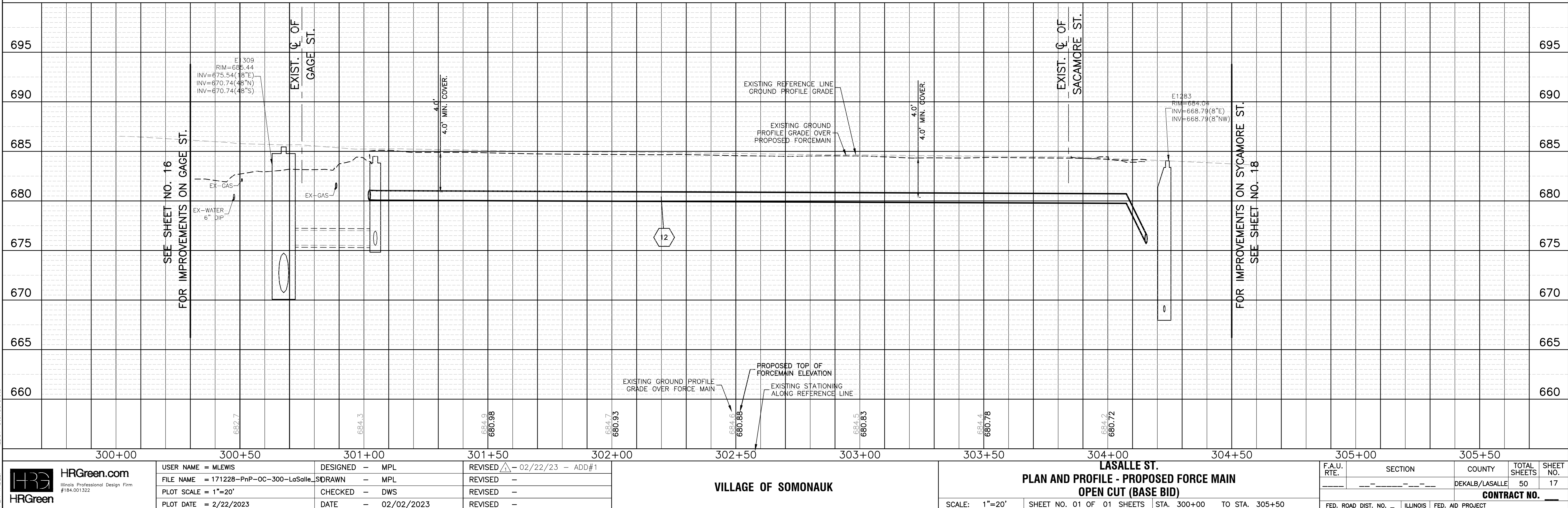
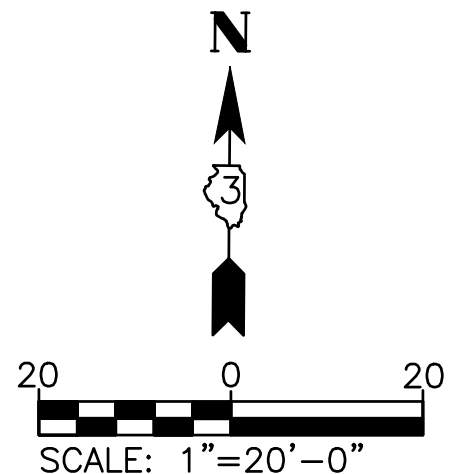
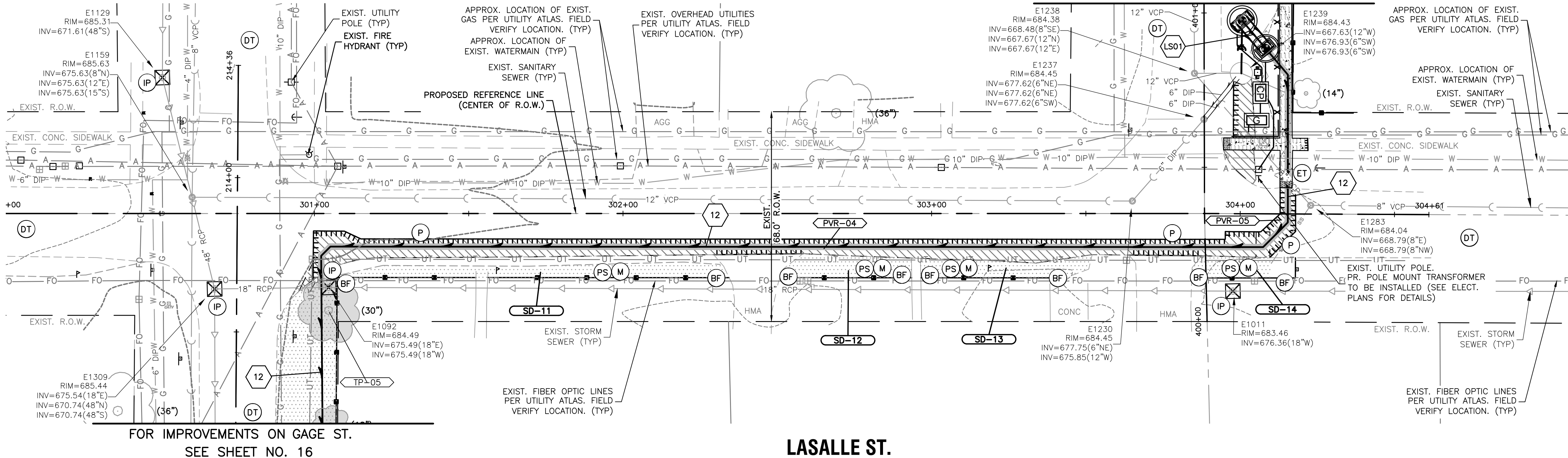
REMOVAL TAGS				
Tag No.	Description	Units	Quantity	
PVR-04	PAVEMENT REM	SY	208.0	
PVR-05	PAVEMENT REM	SY	11.0	
TP-05	TREE TRUNK PROTECTION	EACH	1.0	
TP-05	TREE ROOT PRUNING	EACH	1.0	

PROPOSED TAGS				
Tag No.	Description	Units	Quantity	
PVR-04	CL D PATCH T4	6	SEE REM. QUANT.	
PVR-05	CL D PATCH T4	6	SEE REM. QUANT.	
SD-11	SEEDING CL 1A	SF	497	
SD-12	SEEDING CL 1A	SF	281	
SD-13	SEEDING CL 1A	SF	306	
SD-14	SEEDING CL 1A	SF	173	

FORCEMAIN TAGS:	
12	880' SAN SEW SPL, PVC, C900 (BELL & SPIGOT) FORCE MAIN 10"
LS01	SAN SEW LIFT STATION, (COMPLETE) SEE LIFT STATION PLANS AND SPECS.

LEGEND:	
(X)	INDICATES EROSION CONTROL MEASURE
XXX	INDICATES REMOVAL TAG
#	INDICATES PROP. FORCE MAIN TAG
—	DENOTES TRENCH BACKFILL LOCATIONS
18"	INDICATES MAINTAIN 18" VERTICAL SEPARATION PER TO I.E.P.A.'S REQUIREMENTS

NOTE:  
IF SANITARY SEWER SERVICES ARE FOUND TO BE CROSSING/CONFLICT WITH THE CONSTRUCTION OF THE PROPOSED FORCE MAIN, SANITARY SEWER SERVICES SHALL BE REPLACED. IEPA REQUIREMENTS SHALL BE ADHERED TO. (AS INCLUDED TO CONTRACT) (SEE SPECIFICATIONS)



**HRGreen.com**  
Illinois Professional Design Firm  
#184.001322

USER NAME = MLEWIS	DESIGNED - MPL	REVISED - 02/22/23 - ADD#1
FILE NAME = 171228-PnP-OC-300-LaSalle_St	DRAWN - MPL	REVISED -
PLOT SCALE = 1"=20'	CHECKED - DWS	REVISED -
PLOT DATE = 2/22/2023	DATE - 02/02/2023	REVISED -

VILLAGE OF SOMONAUK

**LASALLE ST.**  
**PLAN AND PROFILE - PROPOSED FORCE MAIN**  
**OPEN CUT (BASE BID)**

SCALE: 1"=20' SHEET NO. 01 OF 01 SHEETS STA. 300+00 TO STA. 305+50

F.A.U. RTE.	SECTION	COUNTY	TOTAL SHEETS	SHEET NO.
		DEKALB/LASALLE	50	17
CONTRACT NO. _____				
FED. ROAD DIST. NO. _____ ILLINOIS FED. AID PROJECT				





PLAN	SURVEYED	BY	DATE
NOTE BOOK	ALIGNMENT CHECKED		
NO.	RT. OF WAY CHECKED		
	CADD FILE NAME		

PROFILE	SURVEYED	BY	DATE
NOTE BOOK	GRADES CHECKED		
NO.	B.M. NOTED		
	STRUCTURE NOTATIONS CHK'D		

COMPANY NAME: **HRGreen.com**  
PROJECT CONTACT: **HRGreen**  
DATE PLOTTED: 2/22/2023 1:17 PM  
FILE NAME: 171228-PnP-HDD-100-WTP  
PLOT DRIVER: DWG To PDF.pc3  
PLOT DATE: 2/22/2023  
PLOT SCALE: 1"=20'

### FORCEMAIN TAGS:

01 EX. OXIDATION DITCH INV @ BLDG = 682.50 (16"E) (CORED)	03 15'X15' JUNCTION SAN MAN (SPECIAL) 2T1F CL (SEE DETAIL) RIM = 689.00 WEIR WALL ELEV. = 686.00 INV = 682.70'(16"W) INV = 676.55'(10"E) INV = 676.35'(10"S)	04 EX. SANITARY MANHOLE (E2516) PROP. EXTERNAL DROP (SEE DETAIL) RIM = 686.61 INV = 676.25 (PROP. UPPER 10"N) INV = 672.00 (PROP. LOWER 10"N) INV = 673.61 (10"S) INV = 671.81 (18"E) INV = 671.81 (18"S) INV = 668.86 (18"NW)	05 8' SAN SEW SPL, DIP, CL52 10" @ 0.59%	07 10' SAN SEW SPL, DIP, CL52 10" @ 0.48%
02 97' SAN SEW SPL, DIP, CL52 16" @ 0.20%		06 PLUG VLVE 10 W/VLVE BOX WITH HANDWHEEL OPERATOR RIM = 686.45 INV = 676.30'(10"N) INV = 676.30'(10"S)	08 894' SAN SEW SPL, PVC, C900 (BELL & SPIGOT) FORCE MAIN 10"	

### LEGEND:

(SEE SHEET 03 FOR SYMBOL AND HATCH LEGENDS)

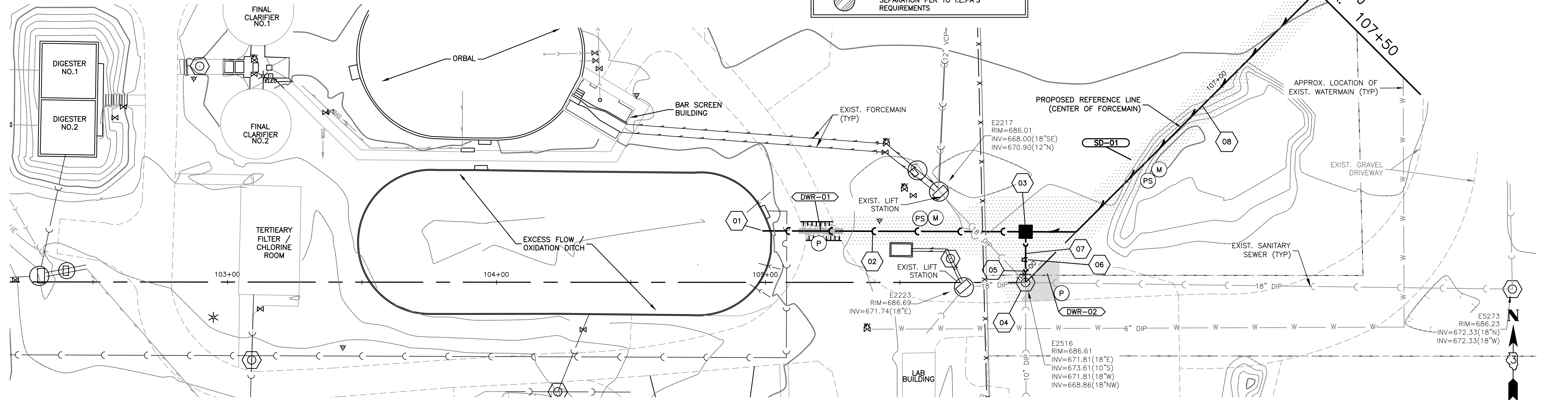
(X)	INDICATES EROSION CONTROL MEASURE
XXX	INDICATES REMOVAL TAG
#	INDICATES PROP. FORCE MAIN TAG
—	DENOTES TRENCH BACKFILL LOCATIONS
	INDICATES MAINTAIN 18" VERTICAL SEPARATION PER TO I.E.PA'S REQUIREMENTS

#### NOTE:

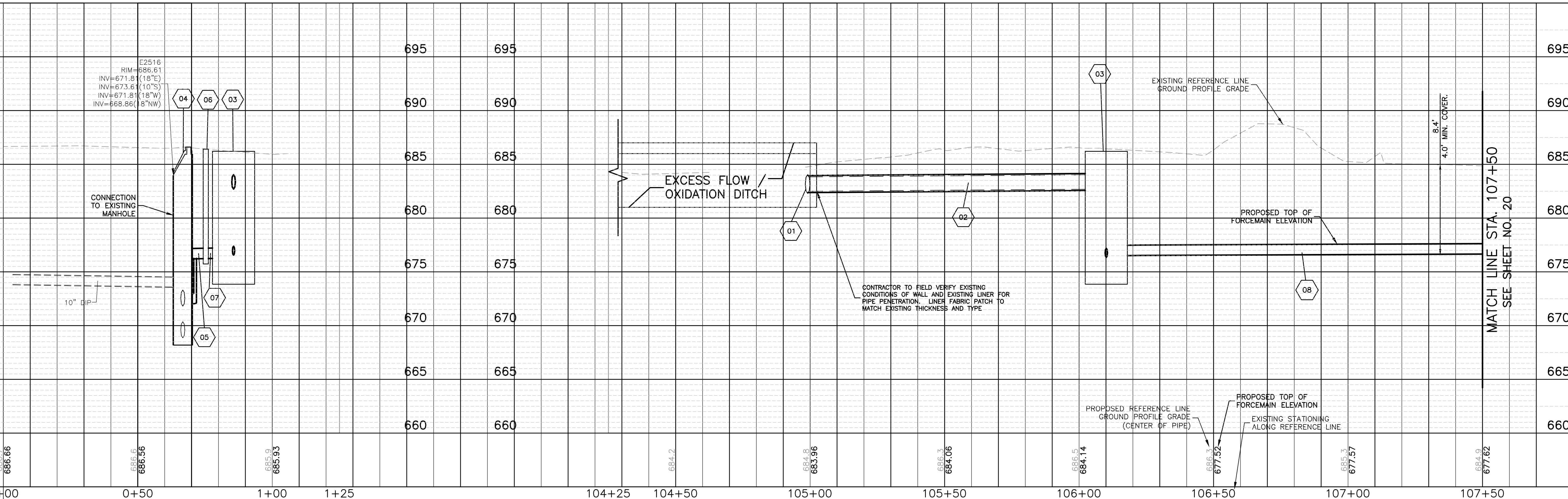
- IF SANITARY SEWER SERVICES ARE FOUND TO BE CROSSING/CONFLICT WITH THE CONSTRUCTION OF THE PROPOSED FORCE MAIN, SANITARY SEWER SERVICES SHALL BE REPLACED. I.E.P.A. REQUIREMENTS SHALL BE ADHERED TO. (AS INCLUDED TO CONTRACT) (SEE SPECIFICATIONS)

Tag No.	Description	Units	Quantity
DWR-01	DRIVE PAVEMENT REM	SY	10.0
DWR-02	DRIVE PAVEMENT REM	SY	17.0

Tag No.	Description	Units	Quantity
DWR-01	HMA DRIVEWAY PAVT	SY	10.0
DWR-02	AGG BASE CSE B	SY	17.0
SD-01	SEEDING CL 1A	SF	3,557



### W.W.T.P. PROPERTY



### VILLAGE OF SOMONAUK

### W.W.T.P. PROPERTY PLAN AND PROFILE - PROPOSED FORCE MAIN DIRECTIONAL DRILL (ALTERNATE BID)

SCALE: 1"=20' SHEET NO. 01 OF 03 SHEETS STA. 102+00 TO STA. 107+50

F.A.U. RTE.	SECTION	COUNTY	TOTAL SHEETS	SHEET NO.
		DEKALB/LASALLE	50	19
CONTRACT NO.				
FED. ROAD DIST. NO. ILLINOIS FED. AID PROJECT				

PLAN	SURVEYED	BY	DATE
NOTE BOOK	ALIGNMENT CHECKED		
NO.	RT. OF WAY CHECKED		
	CADD FILE NAME		

PROFILE	SURVEYED	BY	DATE
NOTE BOOK	GRADES CHECKED		
NO.	B.M. NOTED		
	STRUCTURE NOTATIONS CH'KD		

COMPANY NAME: HRGreen.com  
PROJECT CONTACT: 171228-PnP-HDD-100-WWTP  
DATE PLOTTED: 2/22/2023 1:18 PM  
FILE NAME: 171228-PnP-HDD-100-WWTP  
PLOT DRIVER: DWG To PDF.pc3  
PEN TABLE: ILDOT-Standard.ctb

LEGEND:	
(SEE SHEET 03 FOR SYMBOL AND HATCH LEGENDS)	
	INDICATES EROSION CONTROL MEASURE
	INDICATES REMOVAL TAG
	INDICATES PROP. FORCE MAIN TAG
	DENOTES TRENCH BACKFILL LOCATIONS
	INDICATES MAINTAIN 18" VERTICAL SEPARATION PER TO I.E.P.A'S REQUIREMENTS

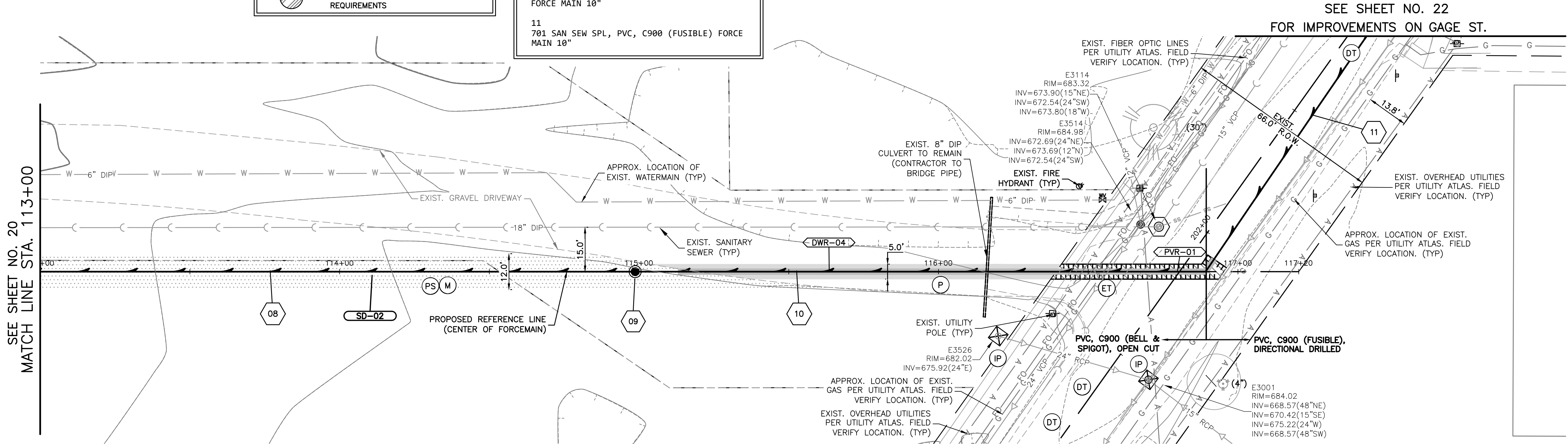
#	FORCEMAIN TAGS:
08	894' SAN SEW SPL, PVC, C900 (BELL & SPIGOT) FORCE MAIN 10"
09	AIR RELEASE VALVE MHL, 5' DIA (SEE DETAIL) RIM = 682.85 TOP = 678.30
10	190' SAN SEW SPL, PVC, C900 (BELL & SPIGOT) FORCE MAIN 10"
11	701 SAN SEW SPL, PVC, C900 (FUSIBLE) FORCE MAIN 10"

REMOVAL TAGS			
Tag No.	Description	Units	Quantity
DWR-04	DRIVE PAVEMENT REM	SY	67.0
PVR-01	PAVEMENT REM	SY	33.0

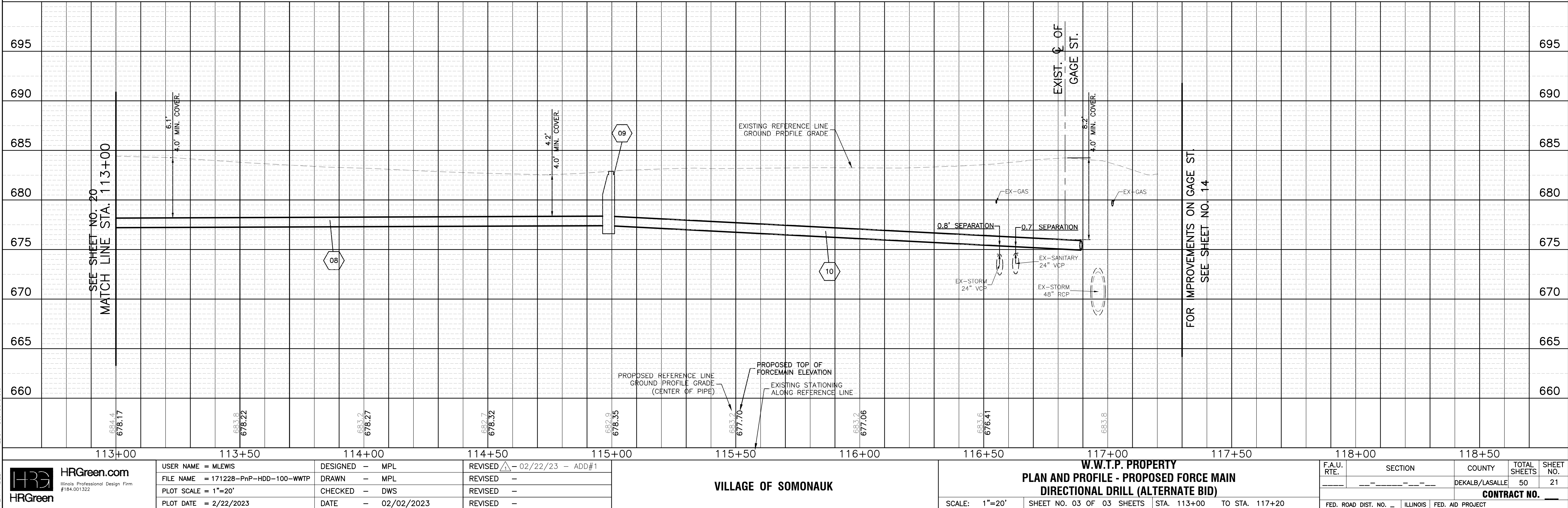
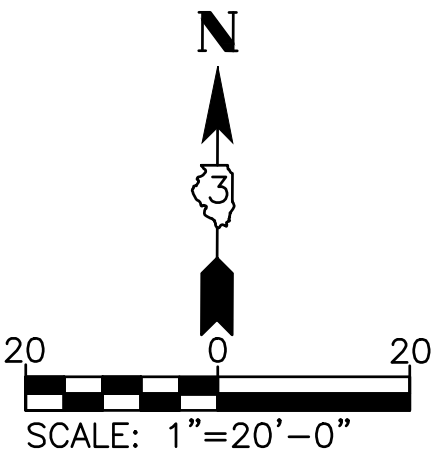
NOTE:  
• IF SANITARY SEWER SERVICES ARE FOUND TO BE CROSSING/CONFLICT WITH THE CONSTRUCTION OF THE PROPOSED FORCE MAIN, SANITARY SEWER SERVICES SHALL BE REPLACED. IEPA REQUIREMENTS SHALL BE ADHERED TO. (AS INCLUDED TO CONTRACT) (SEE SPECIFICATIONS)

PROPOSED TAGS			
Tag No.	Description	Units	Quantity
DWR-04	AGG BASE CSE B 4	SY	67.0
PVR-01	CL D PATCH T4 6	SEE REM. QUANT.	
SO-02	SEEDING CL 1A	SF	8,251

INLET AND PIPE PROTECTION				
Exist. Structure No.	Prop. Structure No.	Station	Side	Quantity EACH
IP-01	N/A	116+20.11'	RT	1.0
IP-02	N/A	201+48.45'	RT	1.0



W.W.T.P. PROPERTY




VILLAGE OF SOMONAUK

W.W.T.P. PROPERTY  
PLAN AND PROFILE - PROPOSED FORCE MAIN  
DIRECTIONAL DRILL (ALTERNATE BID)

SCALE: 1"=20' SHEET NO. 03 OF 03 SHEETS STA. 113+00 TO STA. 117+20

F.A.U. RTE.	SECTION	COUNTY	TOTAL SHEETS	SHEET NO.
		DEKALB/LASALLE	50	21
CONTRACT NO.				
FED. ROAD DIST. NO. ILLINOIS FED. AID PROJECT				



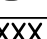


 FORCEMAIN TAGS:

10  
190' SAN SEW SPL, PVC, C900 (BELL & SPIGOT)  
FORCE MAIN 10"

11  
701 SAN SEW SPL, PVC, C900 (FUSIBLE) FORCE  
MAIN 10"

**LEGEND:**

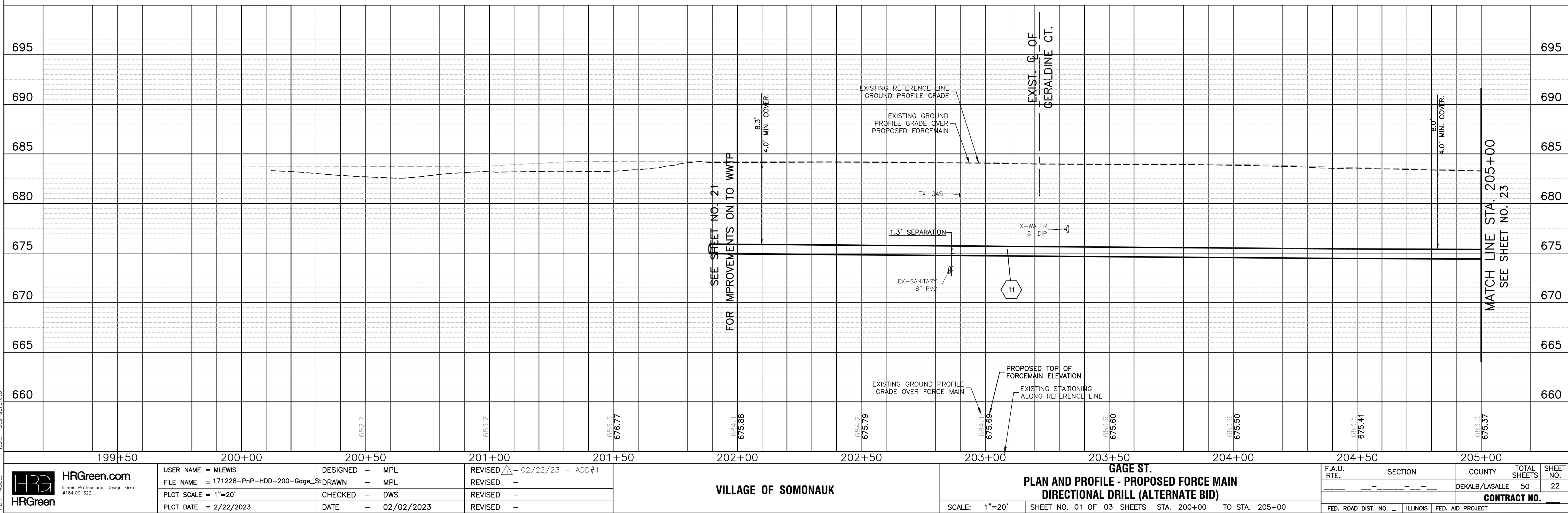
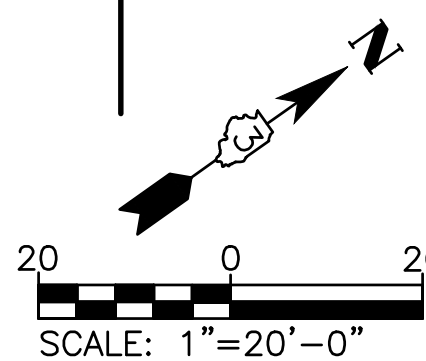
(SEE SHEET 03 FOR SYMBOL AND HATCH LEGENDS)

	INDICATES EROSION CONTROL MEASURE
	INDICATES REMOVAL TAG
	INDICATES PROP. FORCE MAIN TAG
	DENOTES TRENCH BACKFILL LOCATIONS
	INDICATES MAINTAIN 18" VERTICAL SEPARATION PER TO I.E.PA'S REQUIREMENTS

XXX		PROPOSED TAGS		
Tag No.	Description	Units	Quantity	
DWR-04	AGG BASE CSE B 4	SY	67.0	
PVR-01	CL D PATCH T4 6	SEE REM. QUANT.		

NOTE:

- IF SANITARY SEWER SERVICES ARE FOUND TO BE CROSSING/CONFLICT WITH THE CONSTRUCTION OF THE PROPOSED FORCE MAIN. SANITARY SEWER SERVICES SHALL BE REPLACED. IEPA REQUIREMENTS SHALL BE ADHERED TO. (AS INCLUDED TO CONTRACT) (SEE SPECIFICATIONS)





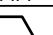







**LEGEND:**

(SEE SHEET 03 FOR SYMBOL AND HATCH LEGENDS)

	INDICATES EROSION CONTROL MEASURE
	INDICATES REMOVAL TAG
	INDICATES PROP. FORCE MAIN TAG
	DENOTES TRENCH BACKFILL LOCATIONS
	INDICATES MAINTAIN 18" VERTICAL SEPARATION PER TO I.E.PA'S REQUIREMENTS

 FORCEMAIN TAGS:

13  
490 SAN SEW SPL, PVC, C900 (FUSIBLE) FORCE  
MAIN 10"

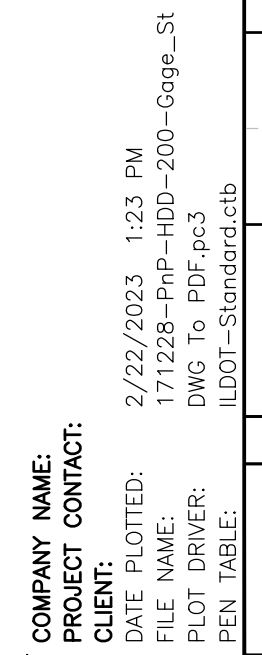
14  
316 SAN SEW SPL, PVC, C900 (FUSIBLE) FORCE  
MAIN 10"

XXX REMOVAL TAGS			
Tag No.	Description	Units	Quantity
PVR-03	PAVEMENT REM	SY	29.0

PROPOSED TAGS			
Tag No.	Description	Units	Quantity
PVR-03	CL D PATCH T4 6	SEE REM. QUANT.	

NOTE:

- IF SANITARY SEWER SERVICES ARE FOUND TO BE CROSSING/CONFLICT WITH THE CONSTRUCTION OF THE PROPOSED FORCE MAIN, SANITARY SEWER SERVICES SHALL BE REPLACED. IEPA REQUIREMENTS SHALL BE ADHERED TO. (AS INCLUDED TO CONTRACT) (SEE SPECIFICATIONS)



PLAN	DATE	BY
SURVEYED		
ALIGNED		
CHECKED		
RT. OF WAY		
CADD FILE NAME		
NO.		

PROFILE	DATE	BY
SURVEYED		
GRADES		
CHECKED		
B.M. NOTED		
STRUCTURE		
NOTATIONS		
CH'KD		
NO.		

COMPANY NAME: **HRGreen.com**  
PROJECT CONTACT: **HRGreen**  
DATE PLOTTED: 2/22/2023 1:26 PM  
FILE NAME: 171228-PNP-HDD-300-Lasalle\_St  
PLOT DRIVER: DWG To PDF.pc3  
PLOT DATE: 2/22/2023  
PLOT SCALE: 1"=20'  
PLOT DATE: 2/22/2023

INLET AND PIPE PROTECTION				
Exist. Structure No.	Prop. Structure No.	Station	Side	Quantity EACH
IP-07	N/A	303+97.78'	RT	1.0

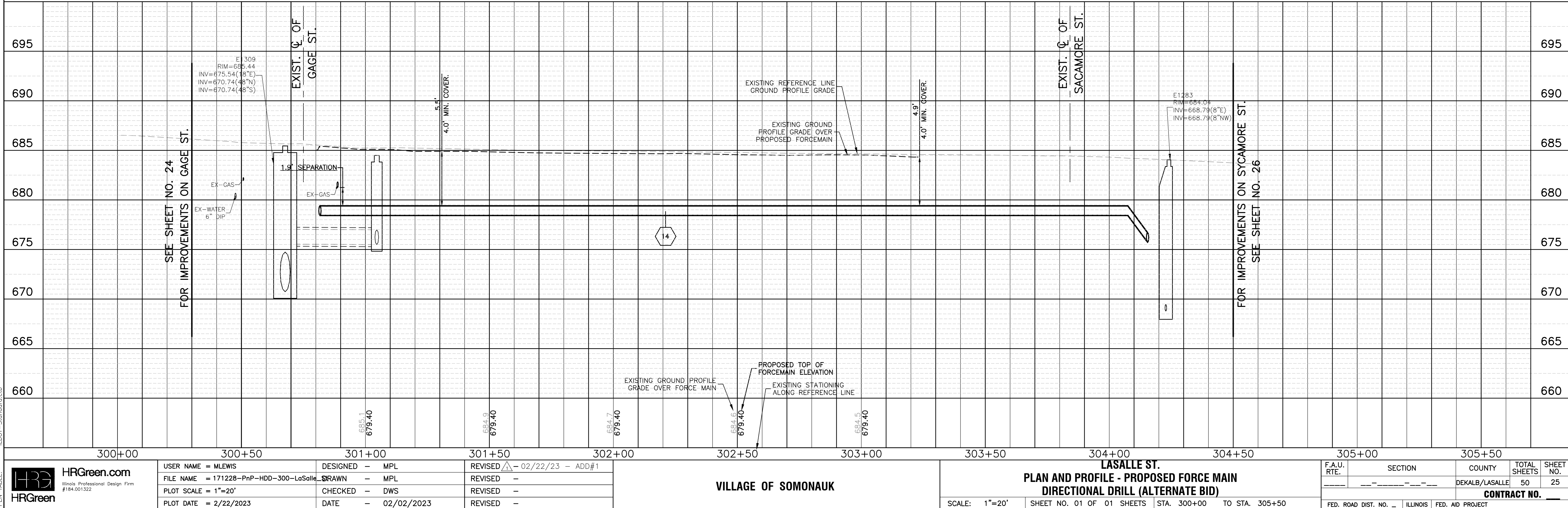
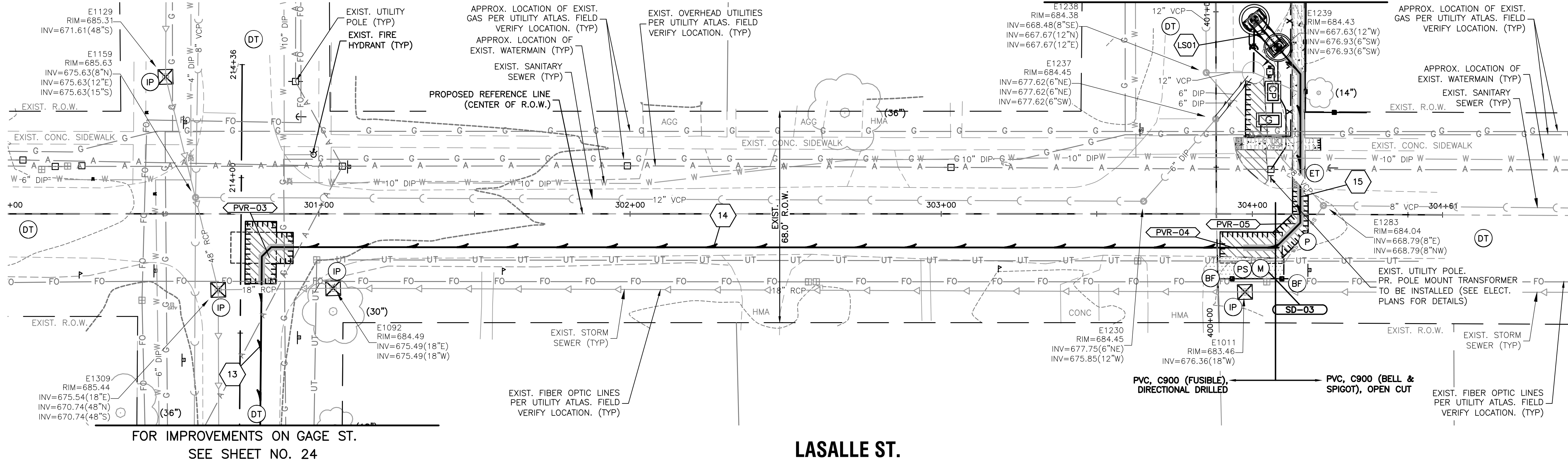
PERIMETER EROSION BARRIER			
Begin Station	End Station	Side	Length LF
303+84.3	304+10.2	RT	33.0

REMOVAL TAGS			
Tag No.	Description	Units	Quantity
PVR-03	PAVEMENT REM	SY	29.0
PVR-04	PAVEMENT REM	SY	19.0
PVR-05	PAVEMENT REM	SY	11.0

PROPOSED TAGS			
Tag No.	Description	Units	Quantity
PVR-03	CL D PATCH T4	6	SEE REM. QUANT.
PVR-04	CL D PATCH T4	6	SEE REM. QUANT.
PVR-05	CL D PATCH T4	6	SEE REM. QUANT.
SD-03	SEEDING-CL 1A	SF	173

LEGEND:	
(X)	INDICATES EROSION CONTROL MEASURE
XXX	INDICATES REMOVAL TAG
#	INDICATES PROP. FORCE MAIN TAG
—	DENOTES TRENCH BACKFILL LOCATIONS
18"	INDICATES MAINTAIN 18" VERTICAL SEPARATION PER TO I.E.P.A'S REQUIREMENTS

FORCEMAIN TAGS:	
13	490' SAN SEW SPL, PVC, C900 (FUSIBLE) FORCE MAIN 10"
14	316' SAN SEW SPL, PVC, C900 (FUSIBLE) FORCE MAIN 10"
15	88' SAN SEW SPL, PVC, C900 (BELL & SPIGOT) FORCE MAIN 10"
LS01	SAN SEW LIFT STATION, (COMPLETE) SEE LIFT STATION PLANS AND SPECS.



VILLAGE OF SOMONAUK

LASALLE ST.  
PLAN AND PROFILE - PROPOSED FORCE MAIN  
DIRECTIONAL DRILL (ALTERNATE BID)

SCALE: 1"=20' SHEET NO. 01 OF 01 SHEETS STA. 300+00 TO STA. 305+50

F.A.U. RTE.	SECTION	COUNTY	TOTAL SHEETS	SHEET NO.
		DEKALB/LASALLE	50	25
CONTRACT NO.				
FED. ROAD DIST. NO. ILLINOIS FED. AID PROJECT				



PLAN

SURVEYED

ALIGNMENT CHECKED

RT. OF WAY CHECKED

NO.

DATE

BY

NOTE BOOK

NO.

DATE

BY

CAO FILE NAME

NO.

DATE

BY

PROFILE

SURVEYED

GRADES CHECKED

B.M. NOTED

STRUCTURE NOTATIONS CHK'D

NO.

DATE

BY

NOTE BOOK

NO.

DATE

BY

STRUCTURE NOTATIONS CHK'D

NO.

DATE

BY

COMPANY NAME

PROJECT CONTACT:

DATE PLOTTED:

FILE NAME:

PLOT DRIVER:

PEN TABLE:

2/22/2023 1:30 PM

171228-PnP-HDD-400-Sycamore\_St

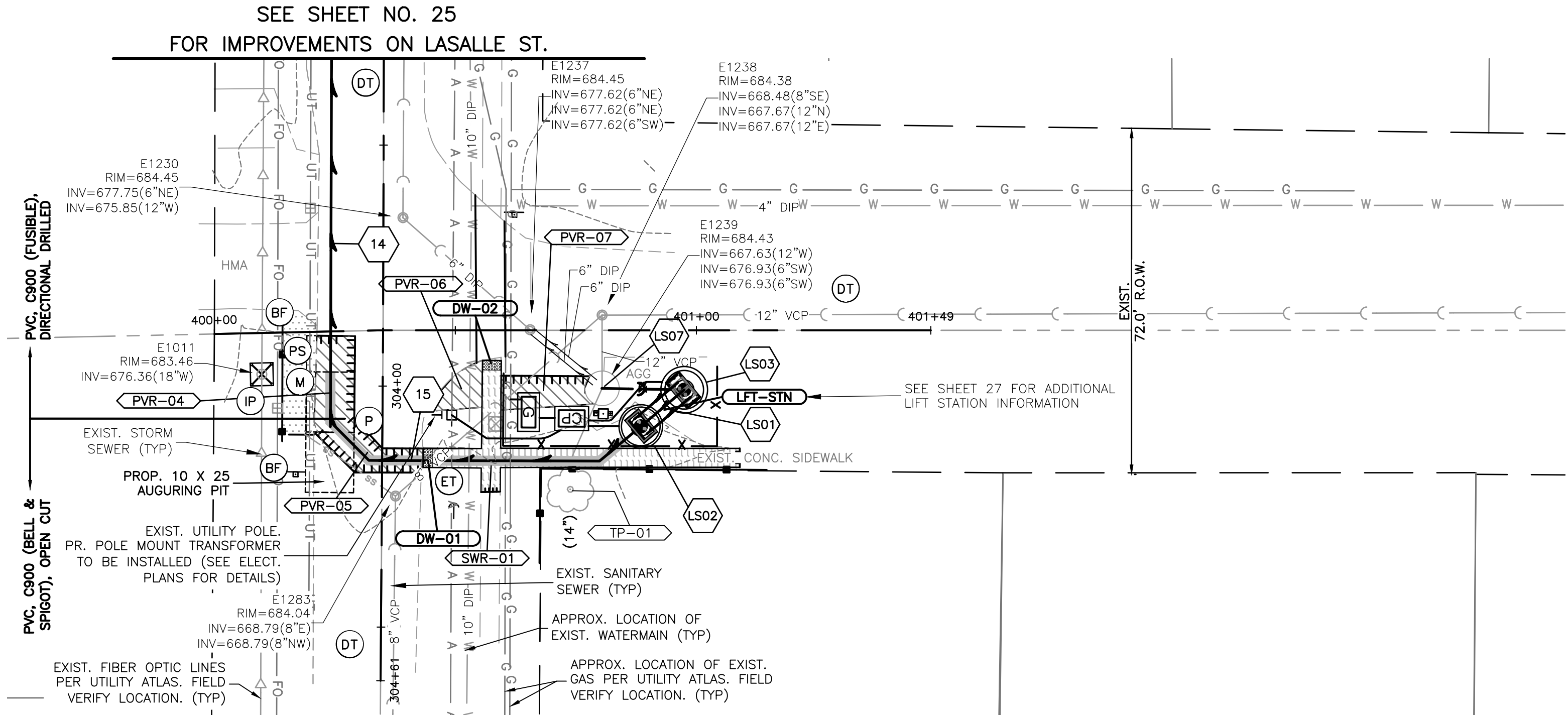
DWG To PDF.pc3

ILDOT-Standard.ctb

HRGreen.com

Illinois Professional Design Firm

#184.001322



**# FORCEMAIN TAGS:**

14  
316 SAN SEW SPL, PVC, C900 (FUSIBLE) FORCE MAIN 10"

15  
80" SAN SEW SPL, PVC, C900 (BELL & SPIGOT) FORCE MAIN 10"

LS01  
SAN SEW LIFT STATION, (COMPLETE)  
SEE LIFT STATION PLANS AND SPECS.

LS02  
MAN SAN 8 DIA T1F CL (SPECIAL), VALVE VAULT (SEE LIFT STATION PLANS)  
RIM = 684.40  
TOP = 676.20

LS03  
MAN SAN 8 DIA T1F CL (SPECIAL), WET WELL (SEE LIFT STATION PLANS)  
RIM = 684.65  
TOP = 676.20  
INV = 667.55 (16"S)

LS04  
8' SAN SEW SPL, DIP, CL52 16"  
@ 0.58%

LS05  
PLUG VLVE 16 W/VLVE BOX WITH HANDWHEEL OPERATOR  
RIM = 684.30  
INV = 667.60' (16"S)  
INV = 667.60' (16"N)

LS06  
8' SAN SEW SPL, DIP, CL52 16"  
@ 0.36%

LS07  
EX. SANITARY MANHOLE (E1239)  
EX. LIFT STATION  
RIM = 684.431  
INV = 676.93 (6"S) (FORCE MAIN)  
INV = 676.93 (6"S) (FORCE MAIN)  
INV = 667.63 (15"W)  
INV = 667.63 (16"N) (CORED)

**LEGEND:**  
(SEE SHEET 03 FOR SYMBOL AND HATCH LEGENDS)

(X) INDICATES EROSION CONTROL MEASURE

XXX INDICATES REMOVAL TAG

# INDICATES PROP. FORCE MAIN TAG

— DENOTES TRENCH BACKFILL LOCATIONS

(Hatched Circle) INDICATES MAINTAIN 18" VERTICAL SEPARATION PER TO I.E.P.A'S REQUIREMENTS

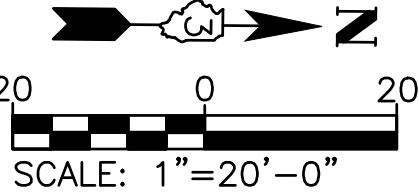
XXX REMOVAL TAGS			
Tag No.	Description	Units	Quantity
PVR-04	PAVEMENT REM	SY	19.0
PVR-05	PAVEMENT REM	SY	11.0
PVR-06	PAVEMENT REM	SY	8.0
PVR-07	PAVEMENT REM	SY	13.0
SWR-01	SIDEWALK REM	SF	351.0
TP-01	TREE TRUNK PROTECTION	EACH	1.0
TP-01	TREE ROOT PRUNING	EACH	1.0

XXX PROPOSED TAGS			
Tag No.	Description	Units	Quantity
PVR-04	CL D PATCH T4	6	SEE REM. QUANT.
PVR-05	CL D PATCH T4	6	SEE REM. QUANT.
PVR-06	CL D PATCH T4	6	SEE REM. QUANT.
PVR-07	CL D PATCH T4	6	SEE REM. QUANT.
SWR-01	PC CONC SIDEWALK 5'	—	SEE REM. QUANT.
DW-01	DETECTABLE WARNINGS	SF	8.0
DW-02	DETECTABLE WARNINGS	SF	8.0
LFT-STN	LIFT STA. (COMPLETE)	EACH	1.0

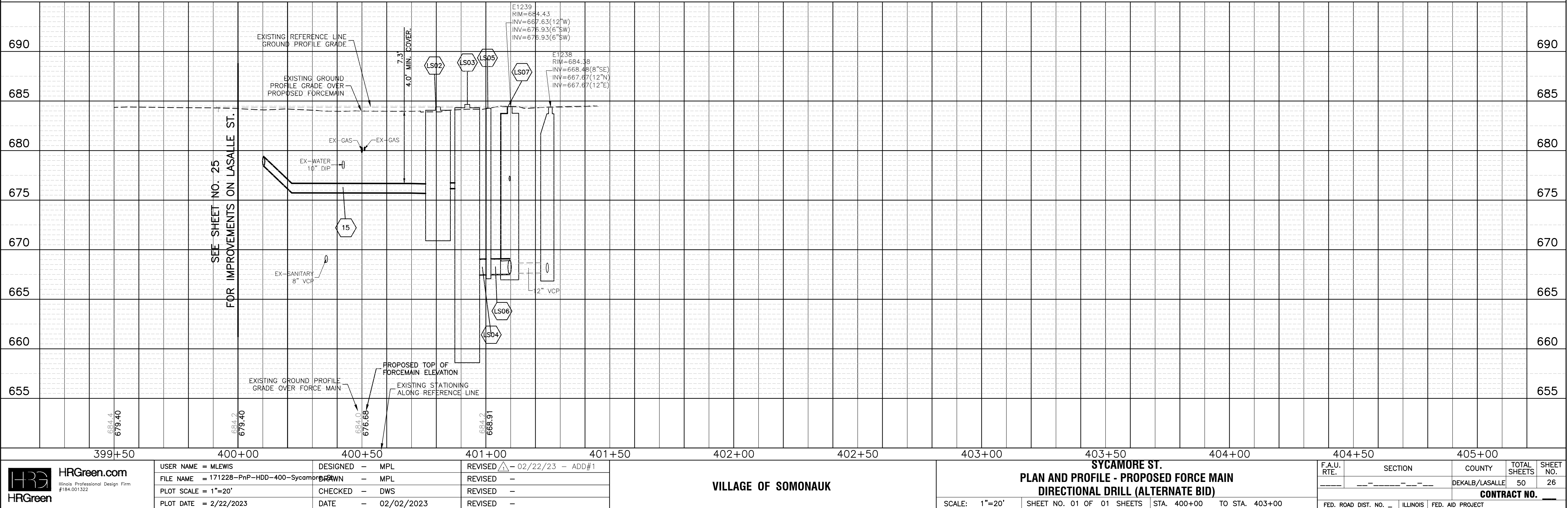
INLET AND PIPE PROTECTION				
Exist. Structure	Prop. Structure	Station	Side	Quantity
No.	No.			EACH
IP-07	N/A	303+97.78'	RT	1.0

PERIMETER EROSION BARRIER			
Begin Station	End Station	Side	Length LF
400+67.6	401+14.6	RT	67.0

NOTE:  
• IF SANITARY SEWER SERVICES ARE FOUND TO BE CROSSING/CONFLICT WITH THE CONSTRUCTION OF THE PROPOSED FORCE MAIN, SANITARY SEWER SERVICES SHALL BE REPLACED. IEPA REQUIREMENTS SHALL BE ADHERED TO. (AS INCLUDED TO CONTRACT) (SEE SPECIFICATIONS)



SYCAMORE ST.



VILLAGE OF SOMONAUK

SYCAMORE ST.  
PLAN AND PROFILE - PROPOSED FORCE MAIN  
DIRECTIONAL DRILL (ALTERNATE BID)

SCALE: 1"=20' SHEET NO. 01 OF 01 SHEETS STA. 400+00 TO STA. 403+00

F.A.U. RTE.	SECTION	COUNTY	TOTAL SHEETS	SHEET NO.
—	—	DEKALB/LASALLE	50	26
CONTRACT NO. —				
FED. ROAD DIST. NO. — ILLINOIS FED. AID PROJECT				