

Bid Addendum No. 1
February 9, 2023

*Subject: Village of Lake Barrington
Hillview Drive and Hillside Drive Improvements
Section No.: 23-00000-00-PV
February 13, 2023 Letting*

To Prospective Bidders:

The contract documents for the above referenced project are hereby amended as set forth below. The information contained within this Addendum No. 1 shall be treated as if it was originally contained within the contract documents.

Modifications to the Schedule of Prices:

Two (2) pay items have been added to the Schedule of Prices. The added pay items are FIRE HYDRANTS TO BE RELOCATED and BOLLARD REMOVAL AND REPLACEMENT.

The total quantity for FIRE HYDRANTS TO BE ADJUSTED has been revised from 2 each to 1 each.

Replace the Schedule of Prices provided in the original bid package with this enclosed Schedule of Prices:

Modifications to the Special Provisions:

Special provisions have been added for FIRE HYDRANTS TO BE RELOCATED and BOLLARD REMOVAL AND REPLACEMENT.

Add the enclosed special provisions page 40 SP:

Modifications to the Summary of Quantities:

Two (2) pay items have been added to the Summary of Quantities. The added pay items are FIRE HYDRANTS TO BE RELOCATED and BOLLARD REMOVAL AND REPLACEMENT.

The pay item total quantity for FIRE HYDRANTS TO BE ADJUSTED has been revised from 2 each to 1 each.

Replace the Summary of Quantities plan sheet number 4 and number 5 provided in the original bid package with this enclosed Summary of Quantities plan sheet number 4 and number 5:

Modifications to the Removal Plans:

The configuration of the lift station area at the north end of Hillview Drive has been revised to fit within the existing easement area. DRIVEWAY PAVEMENT REMOVAL and BOLLARD REMOVAL AND REPLACEMENT items have been adjusted accordingly.

The existing fire hydrant at approximately station 203+02 on Hillside Drive has been changed from FIRE HYDRANTS TO BE ADJUSTED to FIRE HYDRANTS TO BE RELOCATED.

Replace the Removal Plan sheet number 8 and number 9 provided in the original bid package with this enclosed Removal Plan sheet number 8 and number 9:

Modifications to the Roadway Plan and Profiles:

The configuration of the lift station area at the north end of Hillview Drive has been revised to fit within the existing easement area. COMBINATION CONCRETE CURB AND GUTTER, TYPE B6.12 and associated parkway restoration items have been adjusted accordingly.

The existing fire hydrant at approximately station 203+02 on Hillside Drive has been changed from FIRE HYDRANTS TO BE ADJUSTED to FIRE HYDRANTS TO BE RELOCATED. The proposed fire hydrant location with elevation data is provided.

Replace the Roadway Plan and Profiles sheet number 11 and number 12 provided in the original bid package with this enclosed Roadway Plan and Profiles sheet number 11 and number 12:

Modifications to the Construction Details:

The construction detail for Typical Mailbox and Post Detail has been modified to include additional wood bracing. Additionally, a construction detail has been added for Typical Concrete Bollards.

Replace the Construction Detail sheet number 24 provided in the original bid package with this enclosed Construction Detail sheet number 24:

No Proposal shall be considered responsive nor shall any Proposal be considered unless the appropriate space for acknowledgement of the addendum is completed in the original bid package and unless the Proposal is accompanied by a signed and attested copy of this Addendum No. 1. The signed and attested copy of Addendum No. 1 shall be attached to the Proposal.

The undersigned agrees to be bound by the modifications made within this Addendum No. 1, and hereby waives any and all claims based upon the additional or modified information contained herein.

Acknowledgement of Addendum No. 1

Date:

Company Name: _____

Signature: _____

Name: _____



Schedule of Prices

Contractor's Name

Contractor's Address

City

State

Zip Code

Local Public Agency

Village of Lake Barrington

County

Lake

Section Number

23-00000-00-PV

Route(s) (Street/Road Name)

Various

Schedule for Multiple Bids

Combination Letter	Sections Included in Combinations	Total

Schedule for Single Bid

(For complete information covering these items, see plans and specifications.)

Item Number	Items	Unit	Quantity	Unit Price	Total
1	EARTH EXCAVATION FOR WIDENING	CU YD	735		
2	REMOVAL AND DISPOSAL OF UNSUITABLE MATERIAL	CU YD	425		
3	TRENCH BACKFILL	CU YD	291		
4	PARKWAY RESTORATION	SQ YD	2,535		
5	SODDING, SALT TOLERANT	SQ YD	295		
6	TOPSOIL FURNISH & PLACE, 18 INCH	SQ YD	295		
7	SUPPLEMENTAL WATERING	UNIT	44		
8	TEMPORARY DITCH CHECKS	FOOT	45		
9	PERIMETER EROSION BARRIER	FOOT	1,275		
10	INLET FILTERS	EACH	14		
11	AGGREGATE BASE COURSE, TYPE B, 6 INCH	SQ YD	1,035		
12	HOT-MIX ASPHALT DRIVEWAY PAVEMENT, 8 INCH	SQ YD	2,320		
13	BITUMINOUS MATERIALS (TACK COAT)	POUND	1,185		
14	HOT-MIX ASPHALT SURFACE REMOVAL - BUTT JOINT	SQ YD	30		
15	HOT-MIX ASPHALT SURFACE COURSE, MIX "D", N70	TON	640		
16	HOT-MIX ASPHALT BINDER COURSE, IL-19.0, N70	TON	940		
17	PAVEMENT REMOVAL	SQ YD	263		
18	HOT-MIX ASPHALT SURFACE REMOVAL, 5-INCH, SPECIAL	SQ YD	4,652		
19	FULL-DEPTH RECLAMATION, 10 INCH	SQ YD	4,900		
20	CEMENT	TON	130		
21	AGGREGATE BASE COURSE, TYPE B	TON	290		
22	DRIVEWAY PAVEMENT REMOVAL	SQ YD	2,779		
23	COMBINATION CURB AND GUTTER REMOVAL	FOOT	133		
24	PIPE CULVERT REMOVAL	FOOT	214		
25	PIPE CULVERTS, CLASS D, TYPE 1 15"	FOOT	28		
26	STORM SEWERS, CLASS A, TYPE 1 12"	FOOT	195		
27	STORM SEWERS, CLASS A, TYPE 2 12"	FOOT	274		
28	STORM SEWERS, CLASS A, TYPE 2 15"	FOOT	231		
29	STORM SEWERS, CLASS A, TYPE 2 18"	FOOT	338		
30	PRECAST REINFORCED CONCRETE FLARED END SECTIONS 12"	EACH	2		
31	STORM SEWER REMOVAL 12"	FOOT	388		
32	STORM SEWER REMOVAL 15"	FOOT	64		
33	STORM SEWER REMOVAL 18"	FOOT	116		
34	FIRE HYDRANTS TO BE ADJUSTED	EACH	1		
35	PIPE UNDERDRAINS 6" (SPECIAL)	FOOT	550		
36	MANHOLES, TYPE A, 4'-DIAMETER, TYPE 1 FRAME, CLOSED LID	EACH	2		
37	MANHOLES, TYPE A, 4'-DIAMETER, TYPE 8 GRATE	EACH	3		
38	MANHOLES, TYPE A, 4'-DIAMETER, TYPE 11VF&G	EACH	2		
39	MANHOLES, TYPE A, 4'-DIAMETER, WITH MEDIAN INLET (604101)	EACH	1		
40	MANHOLES, TYPE A, 5'-DIAMETER, TYPE 1 FRAME, CLOSED LID	EACH	2		
41	MANHOLES, TYPE A, 5'-DIAMETER, TYPE 8 GRATE	EACH	2		
42	MANHOLES, TYPE A, 5'-DIAMETER, TYPE 11VF&G	EACH	1		
43	INLETS, TYPE A, TYPE 8 GRATE	EACH	1		
44	INLETS, TYPE A, TYPE 10 FRAME AND GRATE	EACH	1		
45	INLETS, TYPE A, TYPE 11V FRAME AND GRATE	EACH	5		
46	INLETS, TYPE B, TYPE 8 GRATE	EACH	1		
47	INLETS, TYPE B, TYPE 10 FRAME AND GRATE	EACH	2		
48	INLETS, TYPE B, TYPE 11V FRAME AND GRATE	EACH	1		
49	MANHOLES TO BE ADJUSTED	EACH	4		
50	VALVE BOXES TO BE ADJUSTED	EACH	9		
51	FRAMES AND LIDS TO BE ADJUSTED (SPECIAL)	EACH	4		
52	DRAINAGE STRUCTURE REPAIR (MORTAR RINGS)	EACH	2		
53	REMOVING MANHOLES	EACH	2		
54	COMBINATION CONCRETE CURB AND GUTTER, TYPE B-6.12	FOOT	3,590		
55	TRAFFIC CONTROL & PROTECTION	L SUM	1		
56	CHANGEABLE MESSAGE SIGN	CAL MO	3		
57	TREE, QUERCUS MACROCARPA (BUR OAK), 2" CALIPER, BALLED AND BURLAPPED	EACH	4		
58	TREE, SYRINGA PEKINENSIS MORTON (CHINA SNOW PEKING LILAC), 2" CALIPER, TREE FORM, BALLED AND BURLAPPED	EACH	2		
59	CONNECTION TO EXISTING SEWER	EACH	3		
60	RELOCATE EXISTING FLARED END SECTION	EACH	1		
61	WASHOUT BASIN	L SUM	1		
62	RELOCATE EXISTING MAILBOX	EACH	10		
63	MAILBOX POST	EACH	10		
64	EXPLORATION TRENCH, SPECIAL	FOOT	100		
65	TEMPORARY PATCHING	SQ YD	200		
66	SANITARY MANHOLES TO BE ADJUSTED	EACH	3		
67	CONSTRUCTION LAYOUT	L SUM	1		
68	LONGITUDINAL JOINT SEALANT	FOOT	1,315		
69	FIRE HYDRANTS TO BE RELOCATED	EACH	1		
70	BOLLARD REMOVAL & REPLACEMENT	EACH	2		
				Bidder's Total Proposal	

1 Each pay item should have a unit price and a total price.

2 If no total price is shown or if there is a discrepancy between the product of the unit price multiplied by the quantity, the unit price shall govern.

3 If a unit price is omitted, the total price will be divided by the quantity in order to establish a unit price.

4 A bid may be declared unacceptable if neither a unit price or total price is shown.

BOLLARD REMOVAL AND REPLACEMENT

Description.

This work consists of the removal of existing bollards surrounding the lift station and installation of a new steel encased concrete bollard, with OSHA yellow PVC covering. The new bollard will be placed in the same general location, surrounding the lift station area.

Materials.

New bollards shall be constructed according to the plan details. A cut sheet of the yellow PVC bollard covering must be submitted to the Engineer for approval.

Measurement.

Bollard removal and replacement will be measured for payment at the time of new bollard installation, and shall include the removal of the existing bollard.

Basis of Payment.

This work will be paid for at the contract unit price per EACH for BOLLARD REMOVAL AND REPLACEMENT which shall include all labor, material, and equipment to complete the work as specified above.

FIRE HYDRANT TO BE RELOCATED

Description.

This work shall be done in accordance with Section 564 of the Standard Specifications and shall consist of relocating existing hydrants to the locations shown on the plans or as directed by the Engineer. At the option of the Village, a new fire hydrant may be supplied to the contractor to complete the relocation.

All materials required must be on site prior to water turn off so that the service interruption will be minimal.

Construction.

To minimize inconvenience to affected residents and businesses, 48 hours prior to shutting down the existing main, the Village and all users that will be affected will be notified in writing. The contractor shall cooperate with Village personnel to locate valves necessary to isolate the work area. The Village personnel shall operate all valves.

If auxiliary valves and boxes are not present at all locations, the contractor shall install them when the hydrant is relocated. The Village will supply the new valve and box.

Measurement and Basis of Payment.

This work shall be paid for at the contract unit price per EACH for FIRE HYDRANT TO BE RELOCATED, which price shall be payment in full for all of the work as specified above which includes adjusting the barrel length, if necessary, to provide eighteen to twenty four inches (18"-24") between the pump nozzle and ground.

HRG PROJECT NO: 21702
HRG PROJ CONTACT:
FILE NAME: 21702-SHT-S00.dgn
PLOT DATE: 2/9/2023
PEN TABLE: 100 Table.tbl



HRGreen.com

Illinois Professional Design Firm
#184-001322

USER NAME	= jstrzal	DESIGNED -	JH	REVISED -	02/09/2023
		DRAWN -	DMS	REVISED -	
PLOT SCALE	= 2.0000 ' / in.	CHECKED -	JJS	REVISED -	
PLOT DATE	= 2/9/2023	DATE -	1/3/2023	REVISED -	

VILLAGE OF LAKE BARRINGTON

SUMMARY OF QUANTITIES
HILLVIEW DRIVE & HILLSIDE DRIVE

SCALE: N.T.S. SHEET 1 OF 2 SHEETS STA. TO STA.

F.A. RTE.	SECTION	COUNTY	TOTAL SHEETS	SHEET NO.
NA	NA	LAKE	43	4
			CONTRACT NO.	NA
		ILLINOIS	FED. AID PROJECT	

* SPECIAL PROVISION

ITEM NO.	ITEM DESCRIPTION	UNIT	TOTAL QUANTITY
1	EARTH EXCAVATION FOR WIDENING	CU YD	735
2	REMOVAL AND DISPOSAL OF UNSUITABLE MATERIAL	CU YD	425
3	TRENCH BACKFILL	CU YD	291
* 4	PARKWAY RESTORATION	SQ YD	2,535
5	SODDING, SALT TOLERANT	SQ YD	295
6	TOPSOIL FURNISH & PLACE, 18 INCH	SQ YD	295
* 7	SUPPLEMENTAL WATERING	UNIT	44
8	TEMPORARY DITCH CHECKS	FOOT	45
9	PERIMETER EROSION BARRIER	FOOT	1,275
10	INLET FILTERS	EACH	14
11	AGGREGATE BASE COURSE, TYPE B, 6 INCH	SQ YD	1,035
* 12	HOT-MIX ASPHALT DRIVEWAY PAVEMENT, 8 INCH	SQ YD	2,320
13	BITUMINOUS MATERIALS (TACK COAT)	POUND	1,185
14	HOT-MIX ASPHALT SURFACE REMOVAL - BUTT JOINT	SQ YD	30
* 15	HOT-MIX ASPHALT SURFACE COURSE, MIX "D", N70	TON	640
* 16	HOT-MIX ASPHALT BINDER COURSE, IL-19.0, N70	TON	940
17	PAVEMENT REMOVAL	SQ YD	263
* 18	HOT-MIX ASPHALT SURFACE REMOVAL, 5-INCH, SPECIAL	SQ YD	4,652
* 19	FULL-DEPTH RECLAMATION, 10 INCH	SQ YD	4,900
* 20	CEMENT	TON	130

ITEM NO.	ITEM DESCRIPTION	UNIT	TOTAL QUANTITY
21	AGGREGATE BASE COURSE, TYPE B	TON	290
* 22	DRIVEWAY PAVEMENT REMOVAL	SQ YD	2,779
23	COMBINATION CURB AND GUTTER REMOVAL	FOOT	133
24	PIPE CULVERT REMOVAL	FOOT	214
25	PIPE CULVERTS, CLASS D, TYPE 1 15"	FOOT	28
26	STORM SEWERS, CLASS A, TYPE 1 12"	FOOT	195
27	STORM SEWERS, CLASS A, TYPE 2 12"	FOOT	274
28	STORM SEWERS, CLASS A, TYPE 2 15"	FOOT	231
29	STORM SEWERS, CLASS A, TYPE 2 18"	FOOT	338
30	PRECAST REINFORCED CONCRETE FLARED END SECTIONS 12"	EACH	2
* 31	STORM SEWER REMOVAL 12"	FOOT	388
* 32	STORM SEWER REMOVAL 15"	FOOT	64
* 33	STORM SEWER REMOVAL 18"	FOOT	116
* 34	FIRE HYDRANTS TO BE ADJUSTED	EACH	1
* 35	PIPE UNDERDRAINS 6" (SPECIAL)	FOOT	550
* 36	MANHOLES, TYPE A, 4'-DIAMETER, TYPE 1 FRAME, CLOSED LID	EACH	2
* 37	MANHOLES, TYPE A, 4'-DIAMETER, TYPE 8 GRATE	EACH	3
* 38	MANHOLES, TYPE A, 4'-DIAMETER, TYPE 11VF&G	EACH	2
* 39	MANHOLES, TYPE A, 4'-DIAMETER, WITH MEDIAN INLET (604101)	EACH	1
* 40	MANHOLES, TYPE A, 5'-DIAMETER, TYPE 1 FRAME, CLOSED LID	EACH	2
* 41	MANHOLES, TYPE A, 5'-DIAMETER, TYPE 8 GRATE	EACH	2

ITEM NO.	ITEM DESCRIPTION	UNIT	TOTAL QUANTITY
* 42	MANHOLES, TYPE A, 5'-DIAMETER, TYPE 11VF&G	EACH	1
* 43	INLETS, TYPE A, TYPE 8 GRATE	EACH	1
* 44	INLETS, TYPE A, TYPE 10 FRAME AND GRATE	EACH	1
* 45	INLETS, TYPE A, TYPE11V FRAME AND GRATE	EACH	5
* 46	INLETS, TYPE B, TYPE 8 GRATE	EACH	1
* 47	INLETS, TYPE B, TYPE 10 FRAME AND GRATE	EACH	2
* 48	INLETS, TYPE B, TYPE11V FRAME AND GRATE	EACH	1
* 49	MANHOLES TO BE ADJUSTED	EACH	4
* 50	VALVE BOXES TO BE ADJUSTED	EACH	9
* 51	FRAMES AND LIDS TO BE ADJUSTED (SPECIAL)	EACH	4
* 52	DRAINAGE STRUCTURE REPAIR (MORTAR RINGS)	EACH	2
53	REMOVING MANHOLES	EACH	2
54	COMBINATION CONCRETE CURB AND GUTTER, TYPE B-6,12	FOOT	3,590
* 55	TRAFFIC CONTROL & PROTECTION	L SUM	1
* 56	CHANGEABLE MESSAGE SIGN	CAL MO	3
* 57	TREE, QUERCUS MACROCARPA (BUR OAK), 2" CALIPER, BALLED AND BURLAPPED	EACH	4
* 58	TREE, SYRINGA PEKINENSIS MORTON (CHINA SNOW PEKING LILAC), 2" CALIPER, TREE FORM, BALLED AND BURLAPPED	EACH	2
* 59	CONNECTION TO EXISTING SEWER	EACH	3
* 60	RELOCATE EXISTING FLARED END SECTION	EACH	1
* 61	WASHOUT BASIN	L SUM	1

ITEM NO.	ITEM DESCRIPTION	UNIT	TOTAL QUANTITY
* 62	RELOCATE EXISTING MAILBOX	EACH	10
* 63	MAILBOX POST	EACH	10
* 64	EXPLORATION TRENCH, SPECIAL	FOOT	100
* 65	TEMPORARY PATCHING	SQ YD	200
* 66	SANITARY MANHOLES TO BE ADJUSTED	EACH	3
* 67	CONSTRUCTION LAYOUT	L SUM	1
* 68	LONGITUDINAL JOINT SEALANT	FOOT	1,315
* 69	FIRE HYDRANTS TO BE RELOCATED	EACH	1
* 70	BOLLARD REMOVAL & REPLACEMENT	EACH	2

* SPECIAL PROVISION

HRG PROJECT NO: 21702
HRG PROJ CONTACT:
FILE NAME: 21702-SPT-S00.dgn
PLOT DATE: 2/9/2023
PEN TABLE: 100-Hatch.tbl



HRGreen.com
Illinois Professional Design Firm
184-001322

USER NAME = jstrzal	DESIGNED - JH	REVISED - 02/09/2023
	DRAWN - DMS	REVISED -
PLOT SCALE = 2.0000 ' / in.	CHECKED - JJS	REVISED -
PLOT DATE = 2/9/2023	DATE - 1/3/2023	REVISED -

VILLAGE OF LAKE BARRINGTON

SUMMARY OF QUANTITIES
HILLVIEW DRIVE & HILLSIDE DRIVE

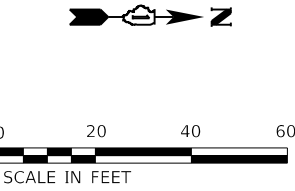
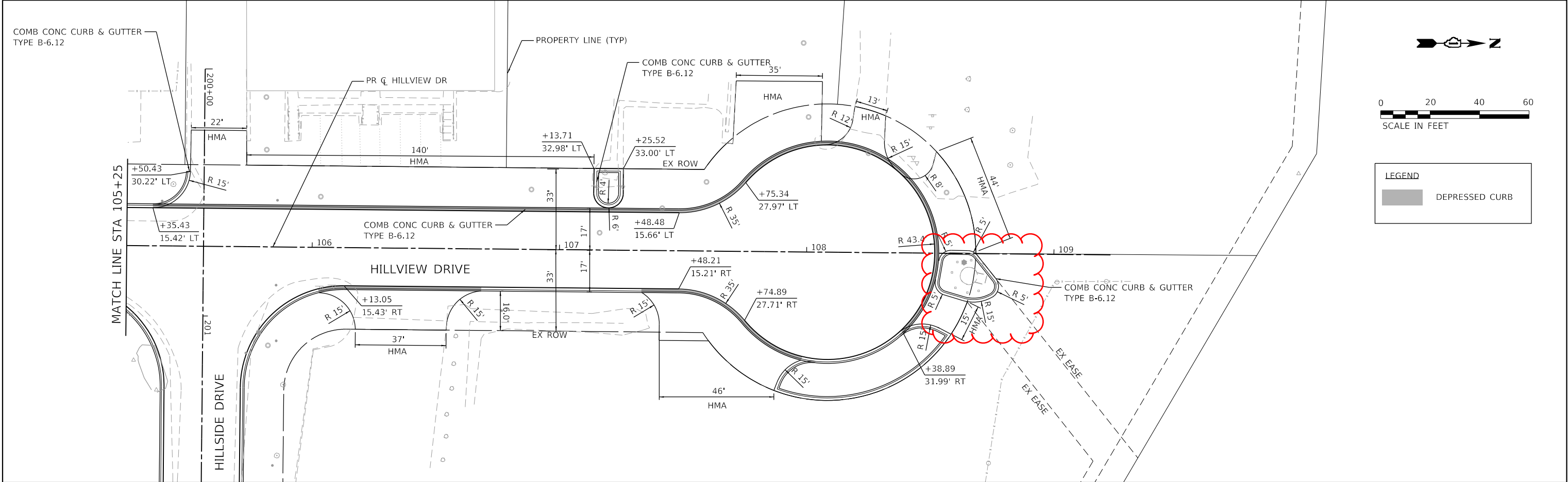
SCALE: N.T.S. SHEET 2 OF 2 SHEETS STA. TO STA.

F.A. RTE.	SECTION	COUNTY	TOTAL SHEETS	SHEET NO.
NA	NA	LAKE	43	5
CONTRACT NO.			NA	
		ILLINOIS	FED. AID PROJECT	

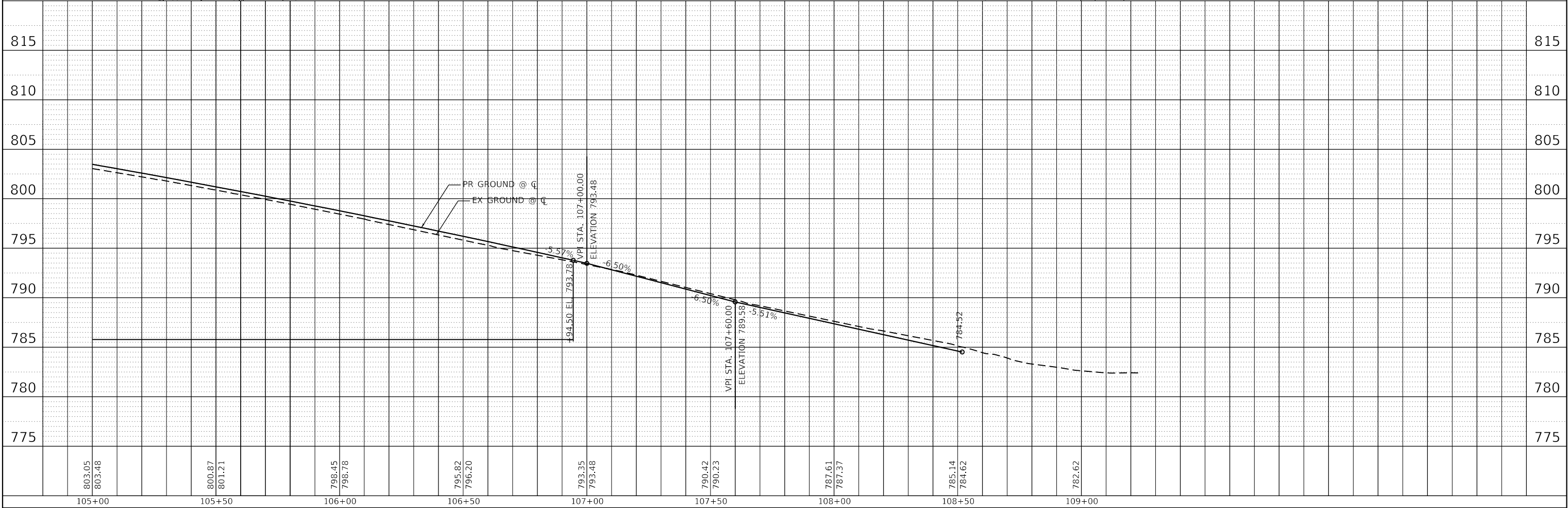
PLAN	SURVEYED	BY	DATE
	PLOTTED		
	ALIGNED		
	CHECKED		
	NOTED		
	FILE NAME		
	NO.		

PROFILE	SURVEYED	BY	DATE
	PLOTTED		
	GRADES		
	CHECKED		
	NOTED		
	STRUCTURE		
	NOTATIONS		
	CHKD		
	NO.		

HRG PROJECT NO.: 21702
HRG PROJ. CONTACT:
FILE NAME: 21702-21702-21702-21702.dgn
PLOT DATE: 2/9/2023
PEN TABLE: 21702.tbl

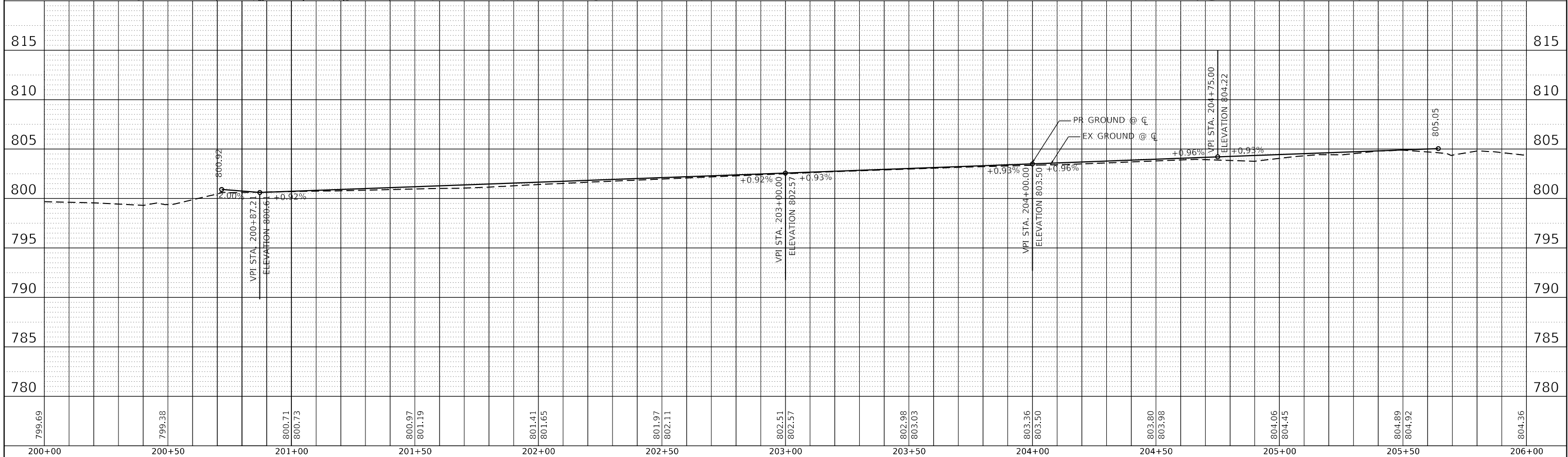


LEGEND
DEPRESSED CURB



 HRGreen.com Illinois Professional Design Firm # 184-001322	USER NAME = jstrzal		DESIGNED - TX	REVISED - 02/09/2023	VILLAGE OF LAKE BARRINGTON				ROADWAY PLAN & PROFILE HILLVIEW DRIVE				F.A. RTE.	SECTION	COUNTY	TOTAL SHEETS	SHEET NO.
			DRAWN - TX	REVISED - XX/XX/XXXX									NA	NA	LAKE	43	11
PLOT SCALE = 40,0000 ' / in.			CHECKED - JJS	REVISED - XX/XX/XXXX									CONTRACT NO.				NA
PLOT DATE = 2/9/2023			DATE - 1/3/2023	REVISED - XX/XX/XXXX									ILLINOIS FED. AID PROJECT				
					SCALE: 1"=20'				SHEET 2 OF 3 SHEETS				STA. 105+25 TO STA. 108+54				

PROFILE	SURVEYED _____	BY _____	DATE _____
	PLOTTED _____		
NOTE BOOK _____	GRADES CHECKED _____		
NO. _____	B.M. NOTED _____		
	STRUCTURE NOTAT'NS CHKD _____		

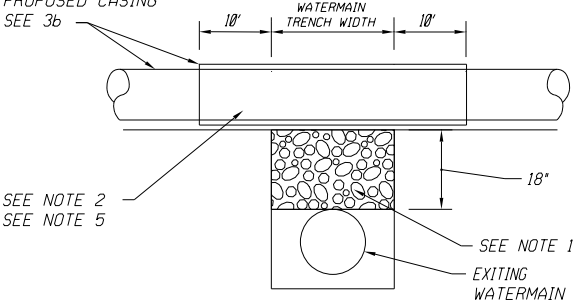


<div><div>HRGreen.com Illinois Professional Design Firm # 184-001322 HRGreen®</div></div>	USER NAME = jstrzal	DESIGNED - TX	REVISED - 02/09/2023	VILLAGE OF LAKE BARRINGTON	ROADWAY PLAN & PROFILE HILLSIDE DRIVE				F.A. RTE.	SECTION	COUNTY	TOTAL SHEETS	SHEET NO.
	PLOT SCALE = 40,0000 ' / in.	DRAWN - TX	REVISED - XX/XX/XXXX						NA	NA	LAKE	43	12
	PLOT DATE = 2/8/2023	CHECKED - JJS	REVISED - XX/XX/XXXX		SCALE: 1"=20'		SHEET 3 OF 3 SHEETS	STA. 200+24 TO STA. 205+85		CONTRACT NO. NA			
		DATE - 1/3/2023	REVISED - XX/XX/XXXX		ILLINOIS FED. AID PROJECT								

EXISTING WATERMAIN BELOW PROPOSED SEWER LINE WITH 18"
MINIMUM SEPARATION.

NOTE: CLASS IV MATERIAL TO BE COMPACTED TO 95% OF STANDARD PROCTOR MAXIMUM DENSITY.

PROPOSED SEWER
SEE 3a, OR
PROPOSED CASING
SEE 3b

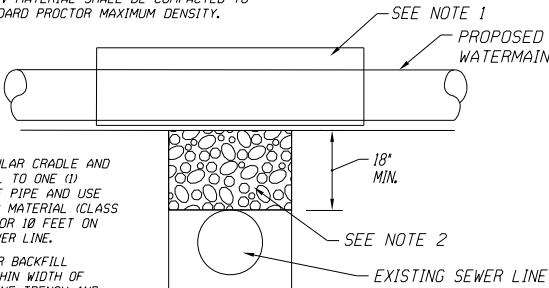


NOTES:

1. IF SELECT GRANULAR BACKFILL EXISTS; REMOVE WITHIN WIDTH OF PROPOSED SEWER TRENCH AND REPLACE WITH SELECT EXCAVATED MATERIAL (CLASS IV) AND COMPACT.
2. OMIT SELECT GRANULAR CRADLE AND GRANULAR BACKFILL TO ONE (1) FOOT OVER TOP OF PIPE AND USE SELECT EXCAVATED MATERIAL (CLASS IV) AND COMPACT FOR 10 FEET ON EITHER SIDE OF WATER MAIN.
3. a. CONSTRUCT 10 FEET OF PROPOSED SEWER WITH WATERMAIN QUALITY PIPE AND PRESSURE TEST, OR;
b. USE 10 FEET OF CASING FOR PROPOSED SEWER AND SEAL ENDS OF CASING.
4. POINT LOADS SHALL NOT BE ALLOWED BETWEEN SEWER OR SEWER CASING AND WATER MAIN.
5. PROVIDE ADEQUATE SUPPORT FOR EXISTING WATERMAIN TO PREVENT DAMAGE DUE TO SETTLEMENT OF SEWER TRENCH.

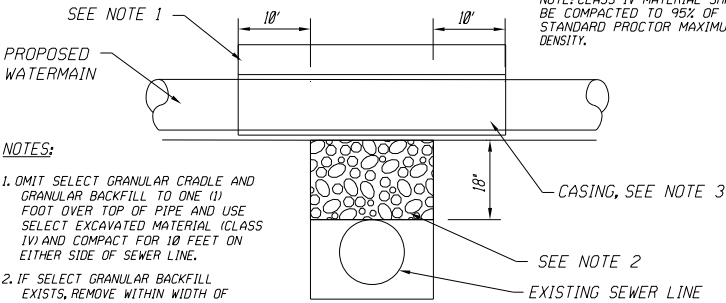
PROPOSED WATERMAIN ABOVE EXISTING SEWER LINE WITH 18"
MINIMUM SEPARATION.

NOTE: CLASS IV MATERIAL SHALL BE COMPACTED TO 95% OF STANDARD PROCTOR MAXIMUM DENSITY.

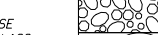


PROPOSED WATER MAIN ABOVE EXISTING SEWER LINE WITH LESS THAN 18"
SEPARATION.

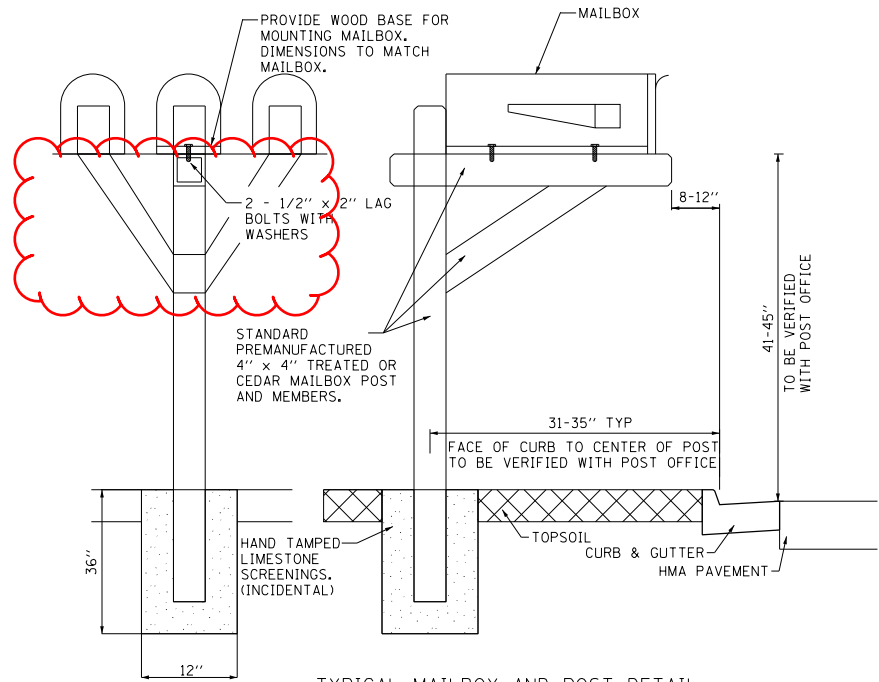
NOTE: CLASS IV MATERIAL SHALL BE COMPACTED TO 95% OF STANDARD PROCTOR MAXIMUM DENSITY.



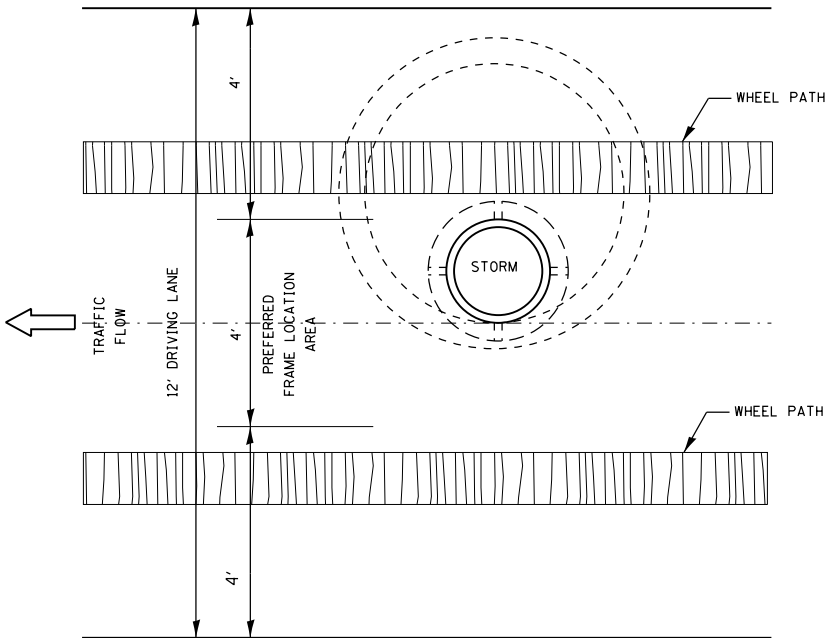
NOTES:

1. OMIT SELECT GRANULAR CRADLE AND GRANULAR BACKFILL TO ONE (1) FOOT OVER TOP OF PIPE AND USE SELECT EXCAVATED MATERIAL (CLASS IV) AND COMPACT FOR 10 FEET ON EITHER SIDE OF SEWER LINE.
2. IF SELECT GRANULAR BACKFILL EXISTS, REMOVE WITHIN WIDTH OF EXISTING SEWER LINE TRENCH AND REPLACE WITH SELECT EXCAVATED MATERIAL (CLASS IV) AND COMPACT.
3. USE A CASING FOR PROPOSED WATER MAIN AND SEAL ENDS OF CASING.
4. POINT LOADS SHALL NOT BE ALLOWED BETWEEN WATER MAIN OR WATERMAIN AND SEWER.
- 
- The diagram is a cross-sectional view of a trench. At the top, there is a layer of granular material labeled 'CASING' with a vertical dimension line indicating a thickness of '18\". Below this is a layer of 'SELECT EXCAVATED MATERIAL (CLASS IV)' which is compacted. A circular pipe is shown within this material. A label 'SEE NO. 1' points to the pipe. Below the pipe is the 'EXISTING' sewer line, which is a horizontal line. The trench is shown as a rectangular cut in the ground.

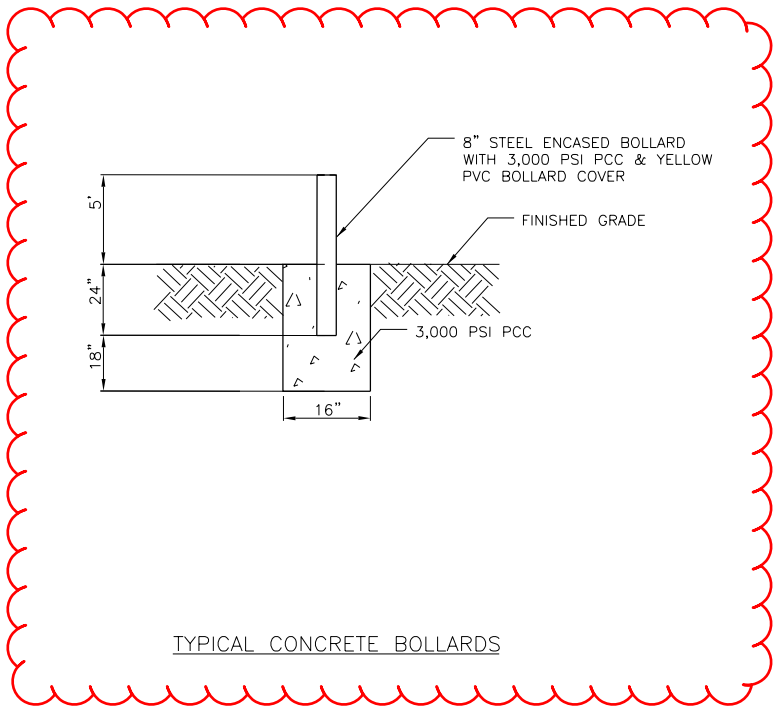
▲ TAKEN FROM THE STANDARD SPECIFICATIONS
FOR WATER AND SEWER
MAIN CONSTRUCTION IN ILLINOIS - SEE PAGES 156-159.



TYPICAL MAILBOX AND POST DETAIL



CASTING IN PAVEMENT DETAIL



TYPICAL CONCRETE BOLLARDS