



GOVERNMENTAL SERVICES

ASSET MANAGEMENT WITH GIS

Turn Data into Decisions

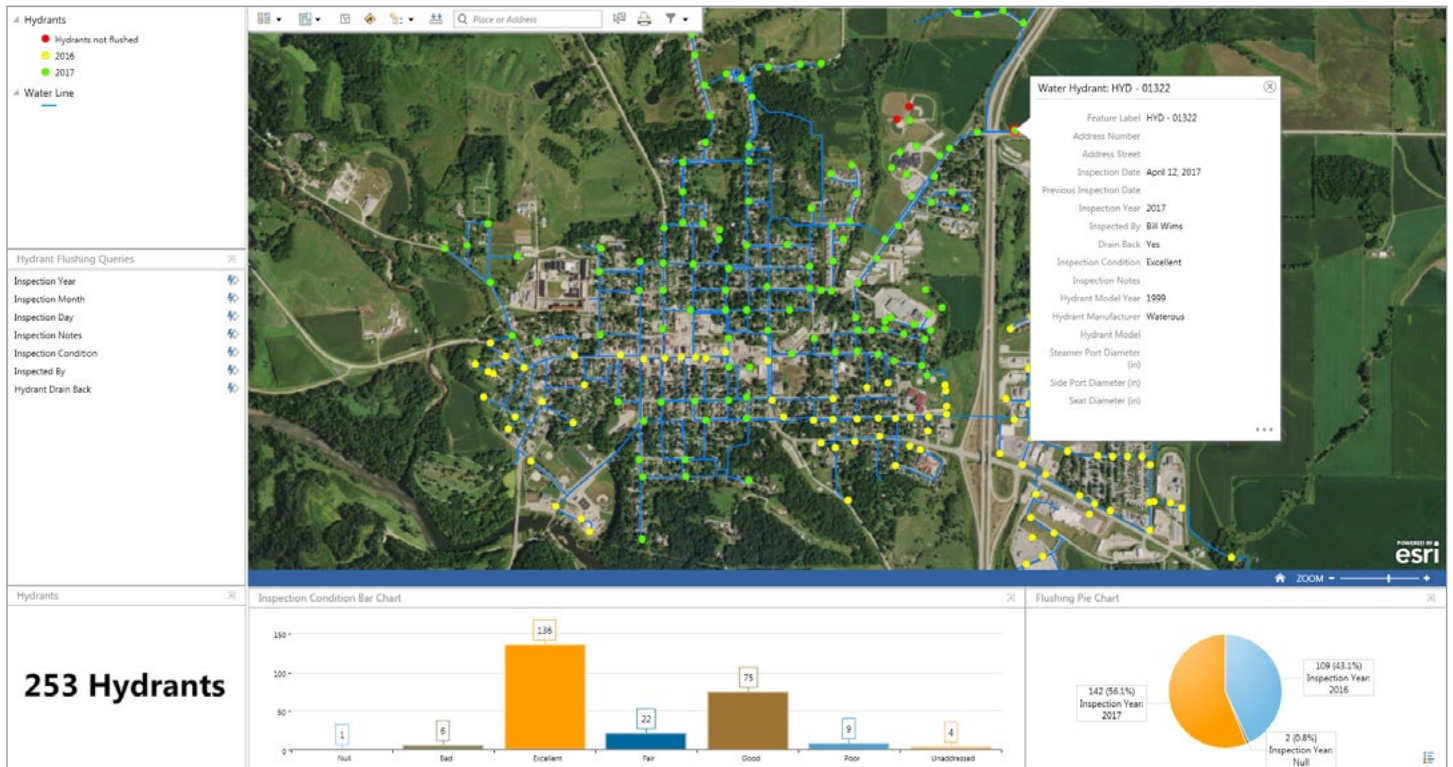
Careful asset management is a critical component of the successful operation of any community. Often times these assets are “out of sight...out of mind” and frequently don’t receive the required maintenance and inspections. This is made especially difficult when the precise location is unknown.

Where are the City’s assets located? What is the condition of these assets? What improvements are needed and how do we most effectively prioritize these improvements in a world of finite resources? Do you have the technology and staff with available time and experience to make this prioritization?

If you find yourself routinely asking questions like these, an asset management solution based in Geographic Information Systems (GIS) may be worth investigating.

▷ Geographic Information Systems (GIS) is an invaluable tool for inventorying and managing municipal assets while also providing a defensible, scientific basis for well-informed capital improvement planning.

Ask HR Green how you can leverage the power of GIS to meet the needs of your community while increasing the efficiency of your staff.



▷ GIS web apps help you turn data into decisions.

HR Green's GIS solutions marry the location of assets with the attribute information necessary to assess needs and plan improvements.

- Valve exercising
- Hydrant flushing
- Gravity main jetting
- Water main break form
- Sanitary I&I
- Stormwater maintenance
- Building permits
- Sign Inventory

The databases that serve as the foundation for these GIS solutions are based on industry standards, further informed by HR Green's professional expertise in engineering and planning, and tailored to the unique demands of our clients.



High-quality automated reports conveniently group, filter, and summarize community GIS data.

Scalable Solutions

No two communities are alike. HR Green embraces these differences by offering “solution scalability” – flexible GIS solutions to meet your community's needs. Top-of-the-line hardware solutions are available, but so are solutions that take advantage of less expensive technology that may already be on hand like smart phones and tablets.

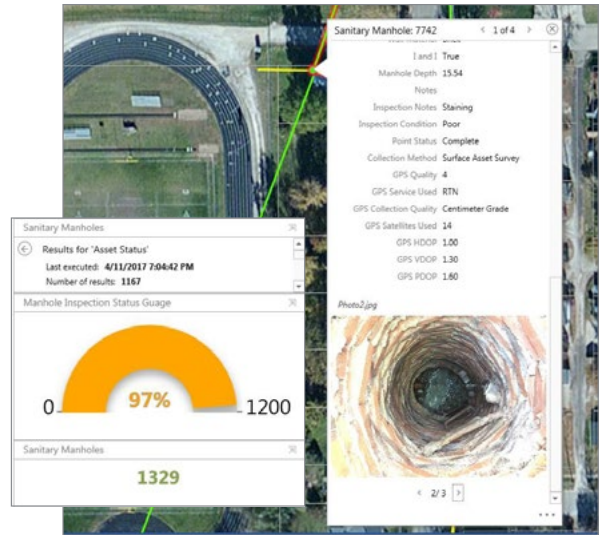


Make use of technology already in your pockets.

In some cases, your available staff may play a central role in the asset inventory effort while, in others, experienced HR Green field personnel are the right choice for completing high-quality jobs on-schedule. We won't act on a solution until we've listened to your story and understand your situation.

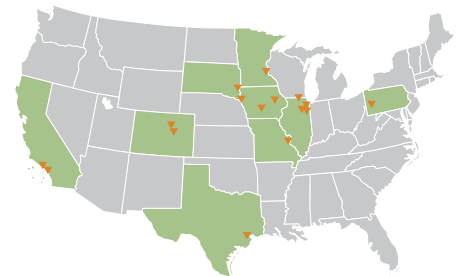


High-accuracy GPS to meet your asset management accuracy standards.



Monitor progress of asset inventory tasks and track data quality measures to locate data gaps.

▷ Founded in 1913, HR Green provides excellence in engineering, technical proficiency, and management services to clients throughout the United States.



- TRANSPORTATION
- + WATER
- + GOVERNMENTAL SERVICES
- + LAND DEVELOPMENT
- + ENVIRONMENTAL
- + CONSTRUCTION

▷ HREEN.COM