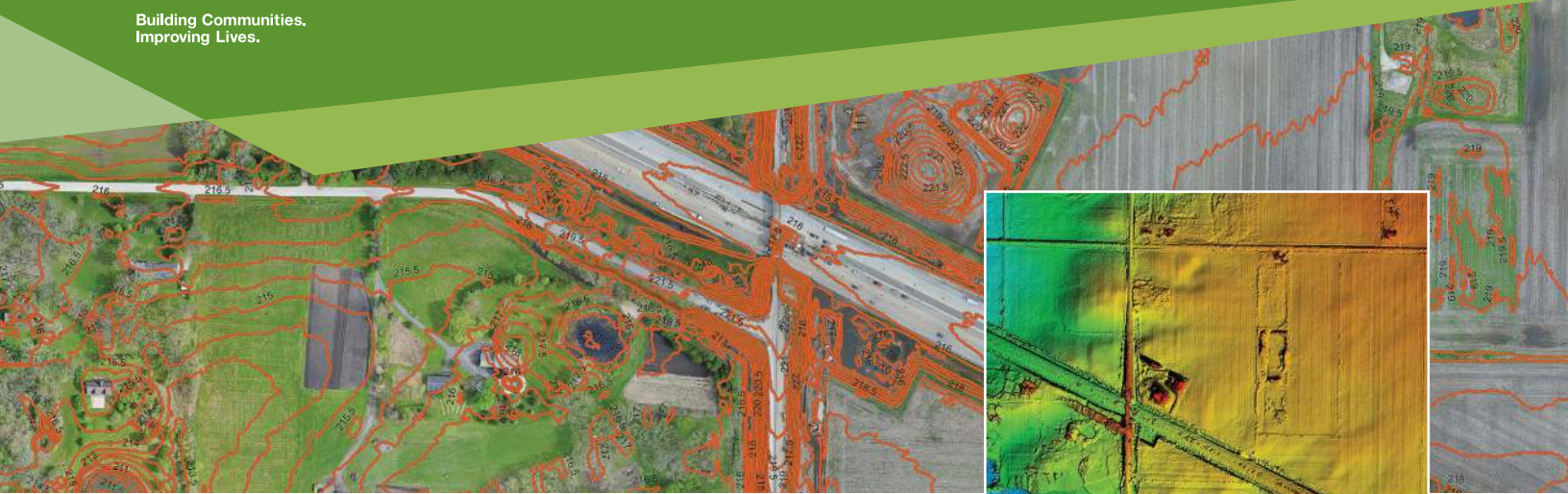




HRGreen®

Building Communities.
Improving Lives.

▶ HRGREEN.COM



Geospatial Services

Land surveying, GIS mapping, data collection, or field observations are often the crucial first step to any project. HR Green's geospatial professionals have a keen eye for detail and keep your project goals front of mind while adapting as required by site conditions.

With every project, our goal is to focus on your project needs, while providing accurate and detailed data. Whether its road alignment staking, topographic survey work, asset inventory, right-of-way and boundary surveying, site documentation, Unmanned Aerial Systems (UAS), or 3D laser scanning, our technology and service are aligned to your project needs.

We coordinate with project teams and assist design professionals in providing the right data. With ongoing training, certifications, and years of experience, we strive to deliver high-quality services and often serve as an extension of your staff. From simple to complex, we pride ourselves in delivering critical information in a format that serves the end user.

We collaborate with our clients from project inception to successful completion, always seeking value driven solutions to your project needs.





Geographic Information Systems (GIS) is an invaluable tool for inventorying and managing municipal assets while also providing a defensible, scientific basis for well-informed capital improvement planning.

GEOSPATIAL SERVICES

► **Geographic Information System (GIS)**

GIS as an essential tool for managing information and establishing a data-driven basis for intelligent planning and decision-making. Beginning with field data collection, data conversion, and analysis - GIS layers data in an accessible and meaningful way. Professional GIS deliverables like map books, database reports, and web mapping applications engage our clients directly. Additionally, our team can assist with training, inspections, or needs assessments.

► **Survey + Mapping**

Surveying is oftentimes a crucial first step in defining and beginning your next project. Our data collection is compatible with Microstation, AutoCAD and ESRI ARC GIS, and we are Illinois Department of Transportation pre-qualified to provide Land and Route survey services. From ROWs, utility mapping, topographic mapping, construction staking, to boundaries and easements, platting for land development, and Land Title Surveys, HR Green is able to provide survey services through licensed professional land surveyors in Illinois, Iowa, Indiana, Minnesota, Missouri, and Wisconsin. Additionally, we provide 3D Laser scanning services, making hard to reach structures or dangerous areas accessible.

► **sUAS (Drone)**

HR Green's FAA licensed operators are highly trained to abide by all FAA regulations as well as monitor safety, trespassing and privacy issues. In addition, HR Green's high-end equipment and cameras can

provide imagery and elevation data. High-quality imagery that can assist with corridor design and construction progress, pavement evaluations, mapping, and detailed before-and-after site photos. Our sUAS is equipped with a camera that uses multispectral sensors that acquire data used for computing various indices in order to create maps for assessing plant health, estimating biomass and more.

► **Asset Management**

Careful asset management is a critical component of the successful operation of any community. Asset locations are married with the attribute information necessary to assess needs and plan improvements. The databases that serve as the foundation for these GIS solutions are based on industry standards, further informed by HR Green's professional expertise in engineering and planning, and tailored to the unique demands of our clients.

Top-of-the-line hardware solutions are available, but so are solutions that take advantage of less expensive technology that may already be on hand like smart phones and tablets.

In some cases, your available staff may play a central role in the asset inventory effort, while in others, experienced HR Green field personnel are the right choice for completing high-quality jobs on-schedule.

No two communities are alike. HR Green embraces these differences by offering "solution scalability" – flexible asset management solutions to meet your project needs.

Scan the QR Code or follow the link below for your local contacts, project information, or industry insights.

► www.hrgreen.com/geospatial

